

Atlas Copco Stationary Air Compressors

GA37, GA45, GA50, GA55 VSD

GA50W, GA55W VSD

WorkPlace and WorkPlace FF

Parts list

From following serial No. onwards:
AII 365 800

No. 2930 1369 01

Registration code : APC G37-55 VSD / 39

Replaces No. 2930 1369 00

2005-06



<https://apsair.ru>

Atlas Copco

Contents	
Inhoud	
Innehåll	
Inhaltsverzeichnis	
Table des matières	
Indice	

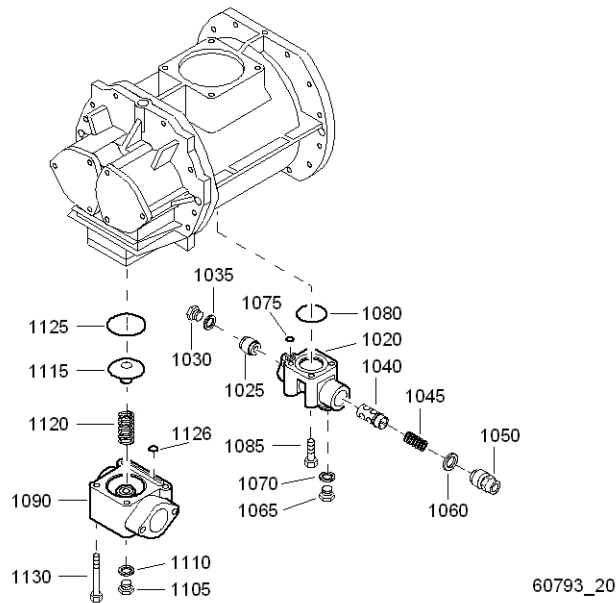
Indice	
Innholdsfortegnelse	
Indice	
Indholdsfortegnelse	
Sisällysluettelo	

Valve parts	Oil system	
Kleponderdelen	Oliesysteem	
Ventildetaljer	Oljesystem	
Ventilteile	Ölsystem	
Détails des soupapes	Système d'huile	
Detalles de las válvulas	Sistema de aceite	
Dettagli delle valvole	Sistema dell'olio	
Ventildele	Oliesystem	
Peças das válvulas	Sistema de óleo	
Ventildeler	Oljesystem	
Venttiilin osat 1	Voitelujärjestelmä	7
	- GA37 VSD, GA45 VSD, GA50 VSD, GA55 VSD	8
	- GA50 W VSD, GA55 W VSD	8
Drive arrangement	Cooler(s)	
Aandrijfuitvoering	Koeler(s)	
Drivarrangemang	Kylare	
Antriebsanordnung	Kühler	
Dispositif d'entraînement	Refrroidisseur(s)	
Disposición de accionamiento	Refrigerador(es)	
Disposizione di azionamento	Refrigeratore(i)	
Arrangement	Kølere	
Disposição de accionamento	Refrigerador(es)	
Drivarrangement	Kjøler(e)	
Rakenne 2	Jäähdyttimet	
	- GA37 VSD, GA45 VSD, GA50 VSD,	9
	GA55 VSD - 1)	9
	- GA37 VSD, GA45 VSD, GA50 VSD,	10
	GA55 VSD - 2)	10
	- GA50 W VSD, GA55 W VSD	11
Motor and coupling	Air outlet	
Motor en koppeling	Luchtuitlaat	
Motor och koppling	Luftutlopp	
Motor und Kupplung	Luftauslaß	
Moteur et accouplement	Sortie d'air	
Motor, y acoplamiento	Salida de aire	
Motore elettrico e giunto	Mandata dell'aria	
Motor og kobling	Luftafgang	
Motor e acoplamento	Saida de ar	
Motor og kopling	Luftutløp	
Mootori ja kytkin 3	Paineilmaputki	
	- WorkPlace - GA37 VSD, GA45VSD, GA50 VSD,	12
	GA55 VSD	12
	- WorkPlace - GA50 W VSD, GA55 W VSD	13
	- WorkPlace FF - 1)	14
	- WorkPlace FF - 2)	15
Air flow	Air dryer	
Luchtstroming	Luchtdroger	
Luftflöde	Lufttorkare	
Luftstrom	Lufttrockner	
Flux d'air	Sécheur d'air	
Flujo de aire	Secador de aire	
Flusso d'aria	Essiccatore d'aria	
Luftflow	Lufttørrer	
Fluxo de ar	Secador de ar	
Luftstrøm	Lufttørker	
Ilman virtaus	Kuivain	
- GA37 VSD, GA45 VSD, GA50 VSD, GA55 VSD 4	- WorkPlace FF	16
- GA50 W VSD, GA55 W VSD 5		
Air receiver		
Luchtketel		
Luftbehållare		
Luftbehälter		
Réservoir d'air		
Depósito de aire		
Serbatoio dell'aria		
Luftbeholder		
Reservatório de ar		
Luftbeholder		
Ilmasäiliö 6		

By-pass	Energy recovery system	
Omloopleiding	Energierecuperatiesysteem	
Förbildningskanal	Energiåtervinningsystem	
Umgehungsleitung	Energierrückgewinnungssystem	
Tuyaux de by-pass	Système de récupération d'énergie	
Tubería de derivación	Sistema de recuperación de energía	
By-pass	Sistema di recupero energia	
By-pass	Energigenvinding	
Tubagem de derivação	Sistema de recuperação de energia	
Omløpsrør	Energigjenvinningsystem	
Ohitus	Energian talteenottojärjestelmä	25
- WorkPlace - GA37 VSD, GA45VSD, GA50 VSD, GA55 VSD		17
- WorkPlace - GA50 W VSD, GA55 W VSD		18
Regulating system	Drain system	
Regelsysteem	Aftapsysteem	
Reglersystem	Avtappingssystem	
Regelsystem	Ablaufsystem	
Système de régulation	Système de vidange	
Sistema de regulación	Sistema de drenaje	
Sistema di regolazione	Sistema di scarico	
Reguleringssystem	Drænsystem	
Sistema de regulação	Sistema de drenagem de condensados	
Reguleringssystem	Avtappingssystem	
Säätöjärjestelmä	Lauhteenpoistojärjestelmä	
	- Oil Separator condensate Drain	26
	- Electronic Water Drain	27
Bodywork	Service kits	
Carrosserie	Service kits	
Karosseri	Service kits	
Karosserie	Service Kits	
Capotage	Service kits	
Carrocería	Service kits	
Cappottatura	Kit per la manutenzione	
Karosseri	Service kits	
Carroceria	Conjuntos de reparação	
Kabinett	Servicesett	
Kotelo	Huoltotarvikesarjat	28
	1) Up to serial No. : API-569 999	
	Tot serienummer:	
	T.o.m. tillverkningsnummer:	
	Bis Seriennummer:	
	Jusqu'au numéro de série:	
	Hasta el número de serie:	
	Fino al numeri di serie:	
	Gælder til følgende serienumre:	
	Até o número de série:	
	Til følgende serienummer:	
	Seuraavaan valmistusnumeroon asti, No.:	
	2) From following serial No. onwards: API-570 000	
	Geldig vanaf volgend serienummer:	
	Fr.o.m. tillverkningsnummer:	
	Gültig ab Seriennummer:	
	Valable à partir du numéro de série suivant:	
	A partir del siguiente número de serie:	
	Dai seguenti numeri di serie in avanti:	
	Gælder fra følgende serienumre:	
	A partir do número de série:	
	Fra og med følgende serienummer:	
	Alkaen valmistusnumerosta	
Cubicle		
Kast		
Skåp		
Schaltschrank		
Armoire		
Armario		
Armadio elettrico		
Elskab		
Quadro		
Skap		
Kotelo		
- GA37, GA45, GA50 (W), GA55 (W) VSD 380-575V/50-60Hz IEC - CSA/UL - 1)		21
- GA37, GA45, GA50 (W), GA55 (W) VSD 380-575V/50-60Hz IEC - CSA/UL - 2)		22
- GA37 VSD 200-230V/50-60Hz - CSA/UL - 1)		23
- GA37 VSD 200-230V/50-60Hz - CSA/UL - 2)		24

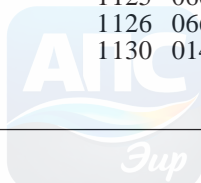
1

Valve parts



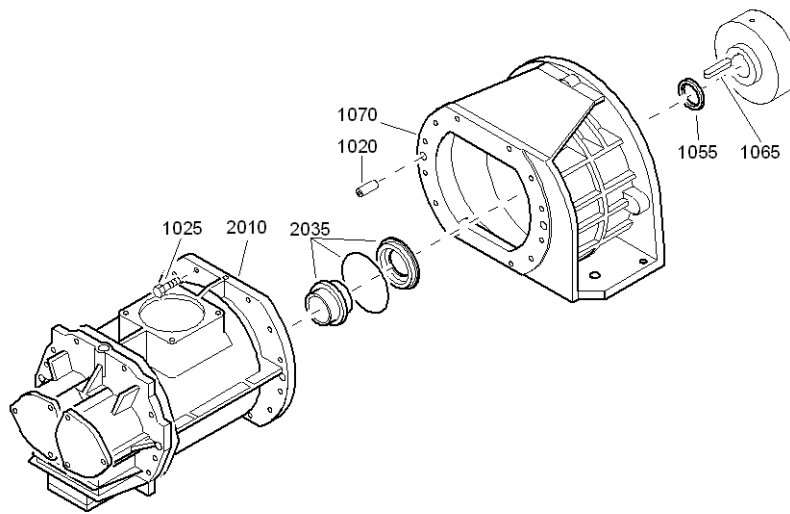
60793_20

Ref.	Part number	Qty	Name	Remarks	Ref.	Part number	Qty	Name	Remarks
1020	1613 2355 00	1	Body		1080	0663 7135 00	1	O-ring	
1025	1613 2359 00	1	Piston		1085	0147 1336 03	4	Hexagon bolt	
1030	0686 3716 07	1	Hexagon plug		1090	1613 7960 01	1	Valve housing	
1035	0661 1000 44	1	Seal washer		1105	0686 3716 38	1	Hexagon plug	
1040	1613 8907 00	1	Valve body (osv)		1110	0661 1000 40	1	Seal washer	
1045	1613 2357 00	1	Compr.spring		1115	1613 8906 00	1	Valve (check valve)	
1050	1613 8140 00	1	Nipple		1120	1613 5165 00	1	Spring	
1060	0661 1000 44	1	Seal washer		1125	0663 7138 00	1	O-ring	
1065	0686 3716 47	1	Hexagon plug		1126	0663 2107 77	1	O-ring	
1070	0661 1000 39	1	Seal washer		1130	0147 1374 03	4	Hexagon bolt	
1075	0663 3120 00	1	O-ring						



Drive arrangement

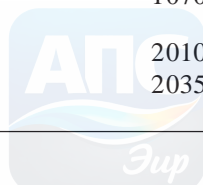
2



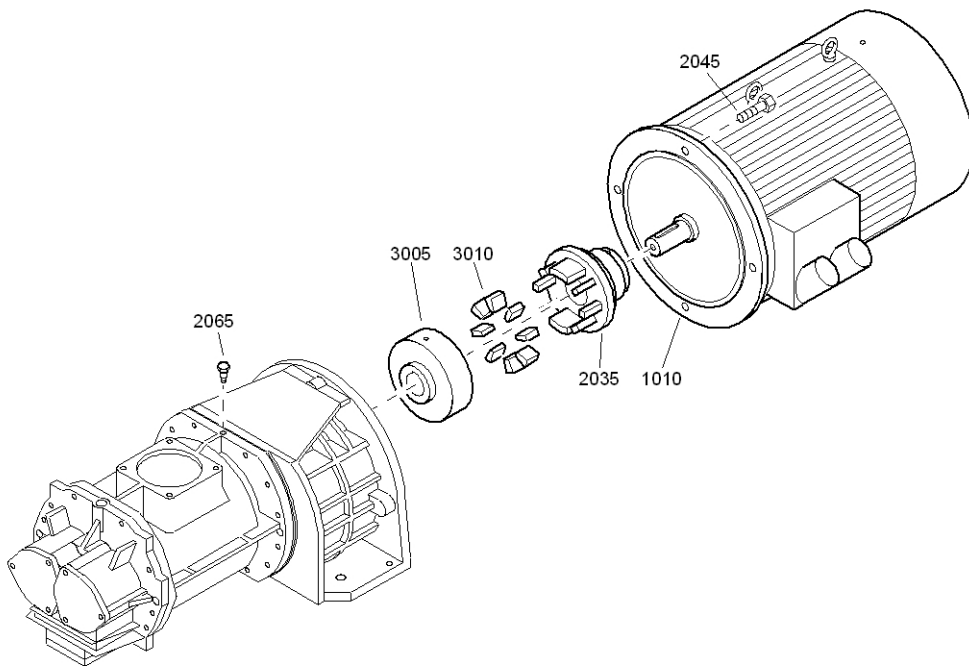
61504_01

61504_01

Ref.	Part number	Qty	Name	Remarks	Ref.	Part number	Qty	Name	Remarks
1020	0101 1951 40	2	Pin		1070	1613 8639 00	1	Coupling housin	
1025	0147 1365 03	12	Hexagon bolt		2989 0158 00	1	1	Service stage	
1055	1613 8699 00	1	Bushing		2010	•	1	Compressor element	
1065	0337 6068 00	1	Parallel key		2035	•	1	Shaft seal kit	



3

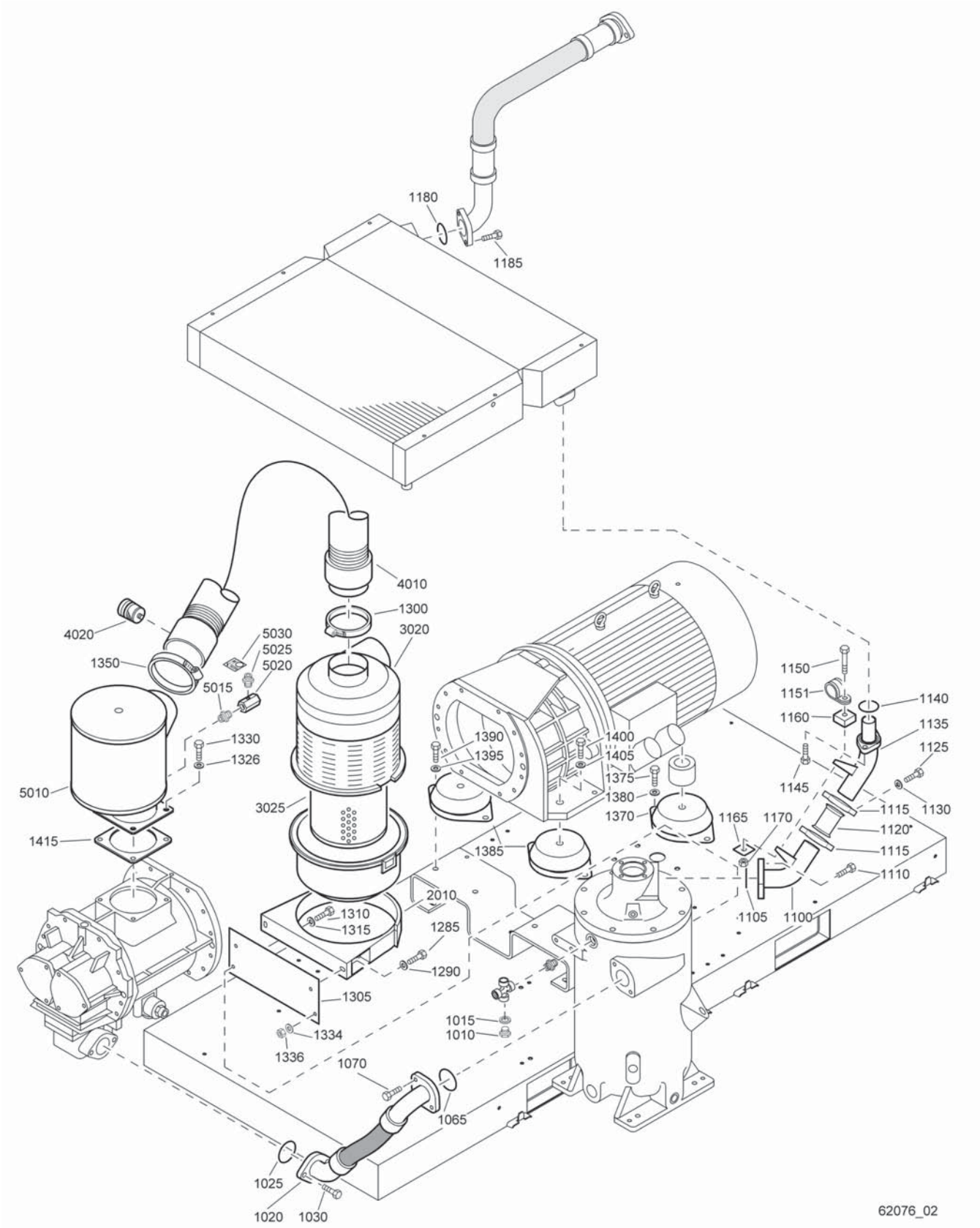


61505_08

Motor and coupling

Ref.	Part number	Qty	Name	Remarks	Ref.	Part number	Qty	Name	Remarks
1010		1	Motor		2035	1613 9594 00	1	Coupling half motor	
	1080 2927 36		GA37VSD - 200V/50Hz, GA37VSD - 200V/60Hz		2045	0147 1477 03	4	Hexagon bolt	
	1080 2927 43		GA50VSD - 440-460V/Hz		2065	1619 6032 00	1	Nipple(spm) 1)	
	1080 2927 45		GA50VSD - 500V/50Hz, GA50VSD - 575V/60Hz			1613 9595 80	1	Coupling ass'y	
	1080 2927 47		GA37VSD - 400V/50Hz, GA45VSD - 400V/50Hz, GA50VSD - 400V/50Hz, GA37VSD - 380V/60Hz, GA50VSD - 380V/60Hz, GA37VSD - 460V/60Hz, GA45VSD - 460V/60Hz, GA50VSD - 460V/60Hz, GA55VSD - 440-460V/ 60Hz		3005	1613 9595 00 •	1	Coupling half	
					3010	1613 9595 01 •	8	Coupling element	
					1)	Vibration monitoring "Shock Pulse Measurement" / Trillingskontrole "SPM" / Vibrationskontroll "Stötpulsmätning" / Schwingungsüberwachung "SPM" / Sur-veillance des vibrations "SPM" / Monitorización de vibraciones "SPM" / Controllo di vibrazione "SPM" / Vibrationsovervågning "SPM" / Controllo de vibrações SPM / Vibrasjonsovervåking "SPM" / SPM- tärinänvalvonta			

4

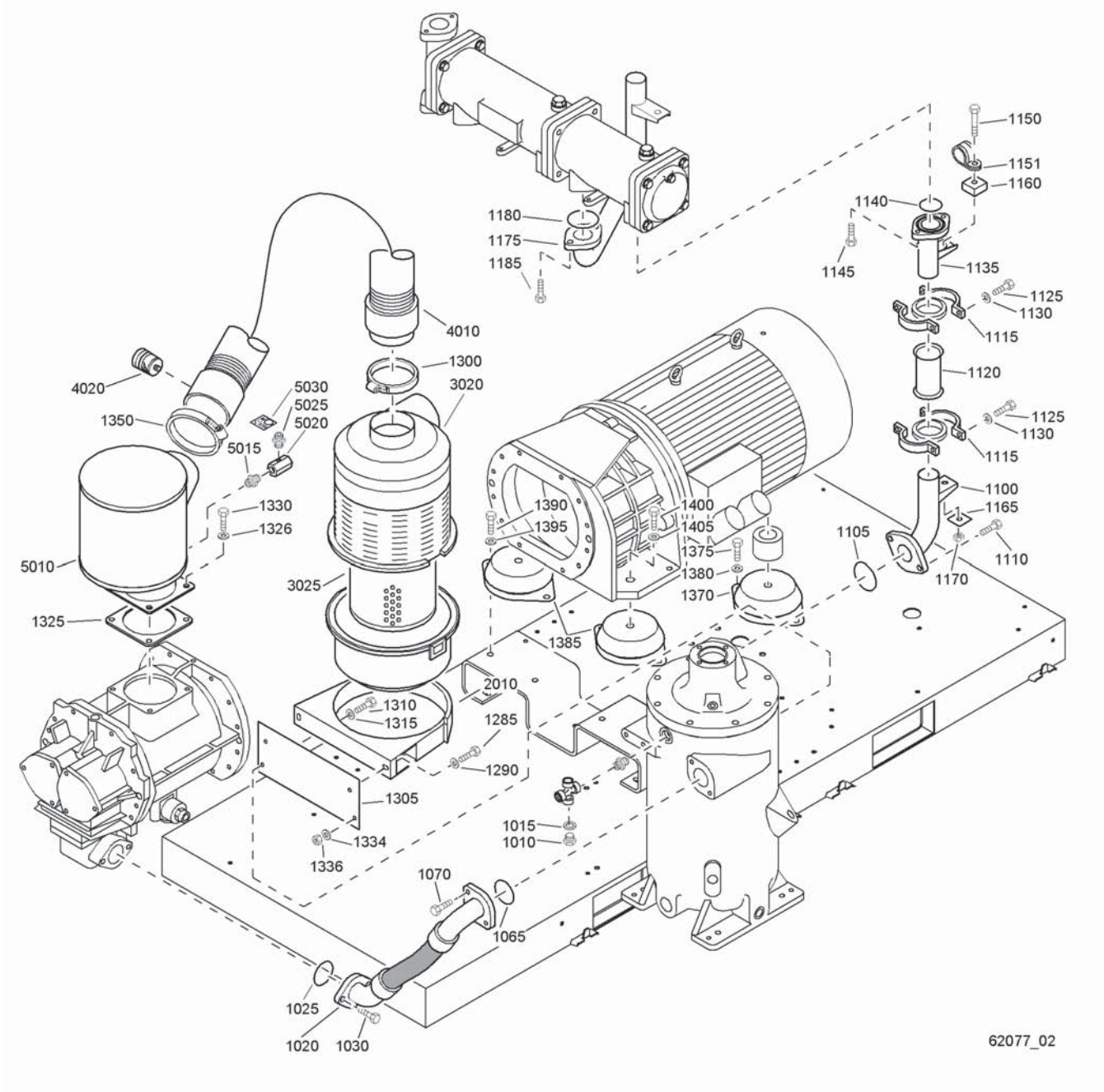


62076_02

Air flow - GA37 VSD, GA45 VSD, GA50 VSD, GA55 VSD

Ref.	Part number	Qty	Name	Remarks	Ref.	Part number	Qty	Name	Remarks
1010	0686 3716 02	1	Hexagon plug		1310	0147 1323 03	2	Hexagon bolt	
1015	0661 1000 39	1	Seal washer		1315	0301 2335 00	2	Washer	
1020	1613 9915 00	1	Hose assembly		1326	0301 2344 00	4	Washer	
1025	0663 7136 00	1	O-ring		1330	0147 1359 03	4	Hexagon bolt	
1030	0211 1401 03	2	Cap screw		1334	0301 2344 00	4	Washer	
1065	0663 7136 00	1	O-ring		1336	0266 2111 00	4	Nut	
1070	0211 1363 03	2	Cap screw		1350	0347 6115 00	1	Hose clip	
1100	1613 8369 00	1	Pipe		1370	1613 6752 13	1	Antivibr.pad	
1105	0663 7138 00	1	O-ring		1375	0147 1400 03	2	Hexagon bolt	
1110	0147 1362 03	2	Hexagon bolt		1380	0301 2358 00	2	Washer	
1115	1613 8377 81	2	Joint set		1385	1613 6752 12	2	Antivibr.pad	
	1613 8377 00	• 1	Joint		1390	0147 1400 03	4	Hexagon bolt	
1120	1613 8375 00	1	Pipe		1395	0301 2358 00	4	Washer	
1125	0147 1960 44	4	Hexagon bolt		1415	1622 0711 00	1	Gasket	
1130	0301 2335 00	4	Washer			1613 7400 81	1	Airfilter assembly	
1135	1613 9962 00	1	Pipe		2010	1613 7401 00	• 1	Support	
1140	0663 7134 00	1	O-ring			1613 7400 00	• 1	Airfilter	
1145	0147 1362 03	2	Hexagon bolt		3020	1613 7432 00	•• 1	Cover	
1150	0147 1962 69	1	Hexagon bolt		3025	1613 7408 00	•• 1	Element	
1151	1613 0807 00	2	Bracket			1613 8580 80	1	Hose + indicator	
1160	1613 8451 01	1	Antivibration pad		4010	1613 8580 00	• 1	Hose	
1165	1613 8452 00	1	Washer		4020	1613 7912 01	• 1	Indicator	
1170	0291 1111 00	1	Lock nut			1622 0704 80	1	Inlet arrestor	
1180	0663 7134 00	1	O-ring		5010	1622 0704 00	• 1	Housing	
1185	0211 1363 03	2	Cap screw		5015	0603 4103 03	• 1	Hexagon nipple	
1190	0653 1100 00	1	Flat gasket		5020	1622 0702 00	• 1	Valve housing	
1285	0147 1327 03	2	Hexagon bolt		5025	1622 0703 00	• 1	Nozzle	
1290	0301 2335 00	2	Washer		5030	1079 9922 60	• 1	Label	
1300	0347 6115 00	1	Hose clip						
1305	1613 8658 00	1	Support						

5

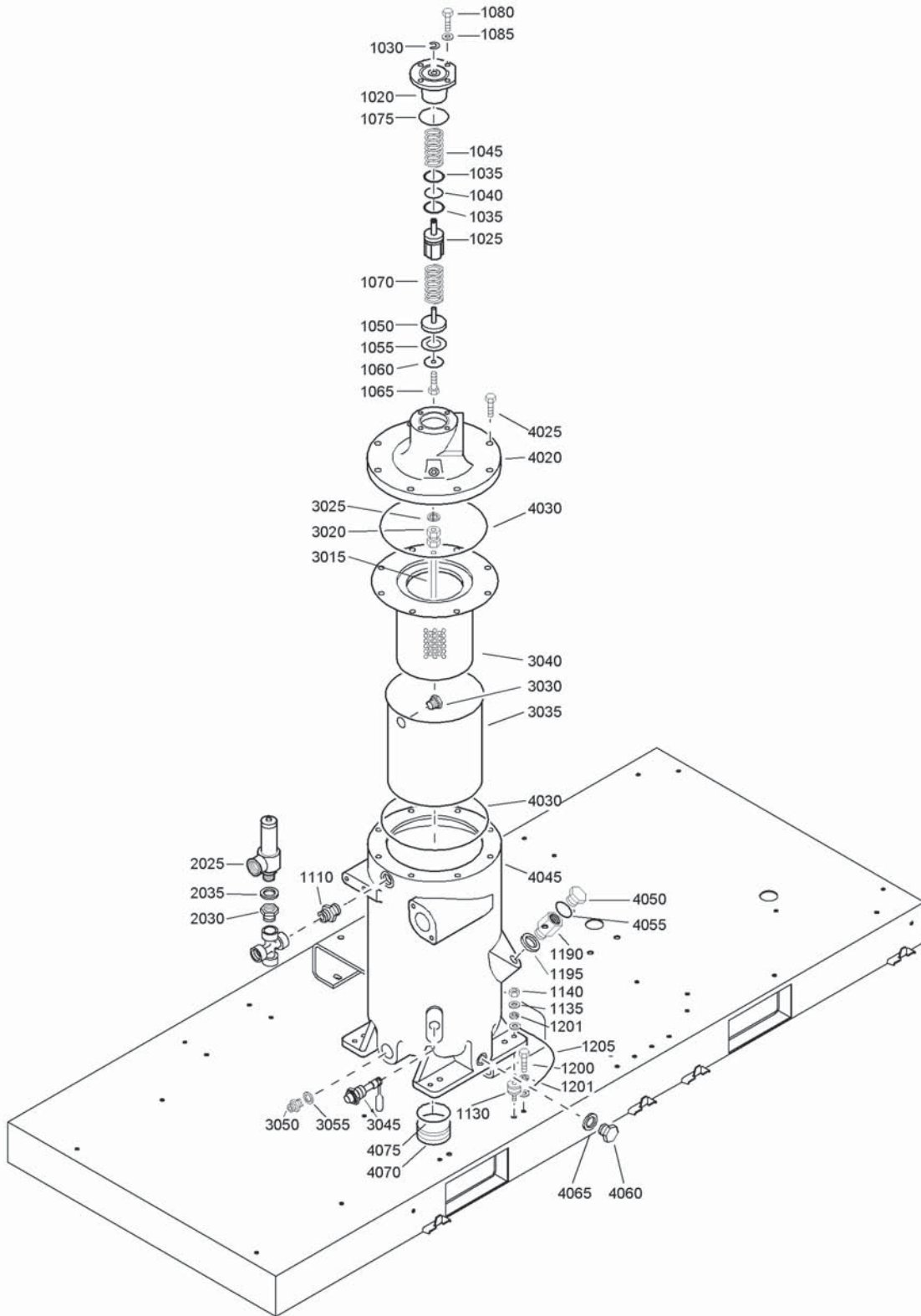


62077_02

Air flow - GA50W VSD, GA55W VSD

Ref.	Part number	Qty	Name	Remarks	Ref.	Part number	Qty	Name	Remarks
1010	0686 4206 00	1	Hexagon plug		1305	1613 8658 00	1	Support	
1015	0661 1000 39	1	Seal washer		1310	0147 1323 03	2	Hexagon bolt	
1020	1613 9915 00	1	Hose assembly		1315	0301 2335 00	2	Washer	
1025	0663 7136 00	1	O-ring		1325	1622 0711 00	1	Gasket	
1030	0211 1401 03	2	Cap screw		1326	0301 2344 00	4	Washer	
1065	0663 7136 00	1	O-ring		1330	0147 1359 03	4	Hexagon bolt	
1070	0211 1363 03	2	Cap screw		1334	0301 2344 00	4	Washer	
1100	1622 0186 00	1	Pipe		1336	0266 2111 00	4	Nut	
1105	0663 7138 00	1	O-ring		1350	0347 6115 00	1	Hose clip	
1110	0147 1362 03	2	Hexagon bolt		1370	1613 6752 13	1	Antivibr.pad	
1115	1613 8377 81	2	Joint set		1375	0147 1400 03	2	Hexagon bolt	
	1613 8377 00	1	Joint		1380	0301 2358 00	2	Washer	
1120	1613 8375 00	1	Pipe		1385	1613 6752 12	2	Antivibr.pad	
1125	0147 1960 44	4	Hexagon bolt		1390	0147 1400 03	4	Hexagon bolt	
1130	0301 2335 00	4	Washer		1395	0301 2358 00	4	Washer	
1135	1622 0185 00	1	Pipe		1400	0147 1479 03	2	Hexagon bolt	
1140	0663 7134 00	1	O-ring		1405	0301 2378 00	2	Washer	
1145	0147 1362 03	2	Hexagon bolt			1613 7400 81	1	Airfilter assembly	
1150	0147 1962 69	1	Hexagon bolt		2010	1613 7401 00	1	Support	
1151	1613 0807 00	2	Bracket			1613 7400 00	1	Airfilter	
1160	1613 8451 01	1	Antivibration pad		3020	1613 7432 00	1	Cover	
1165	1613 8452 00	1	Washer		3025	1613 7408 00	1	Element	
1170	0291 1111 00	1	Lock nut			1613 8580 80	1	Hose + indicator	
1175	1613 9923 00	1	Pipe		4010	1613 8580 00	1	Hose	
1180	0663 7134 00	1	O-ring		4020	1613 7912 01	1	Indicator	
1185	0211 1363 03	2	Cap screw			1622 0704 80	1	Inlet arrestor	
1190	0653 1100 00	1	Flat gasket		5010	1622 0704 00	1	Housing	
1285	0147 1327 03	2	Hexagon bolt		5015	0603 4103 03	1	Hexagon nipple	
1290	0301 2335 00	2	Washer		5020	1622 0702 00	1	Valve housing	
1300	0347 6115 00	1	Hose clip		5025	1622 0703 00	1	Nozzle	
					5030	1079 9922 60	1	Label	

6



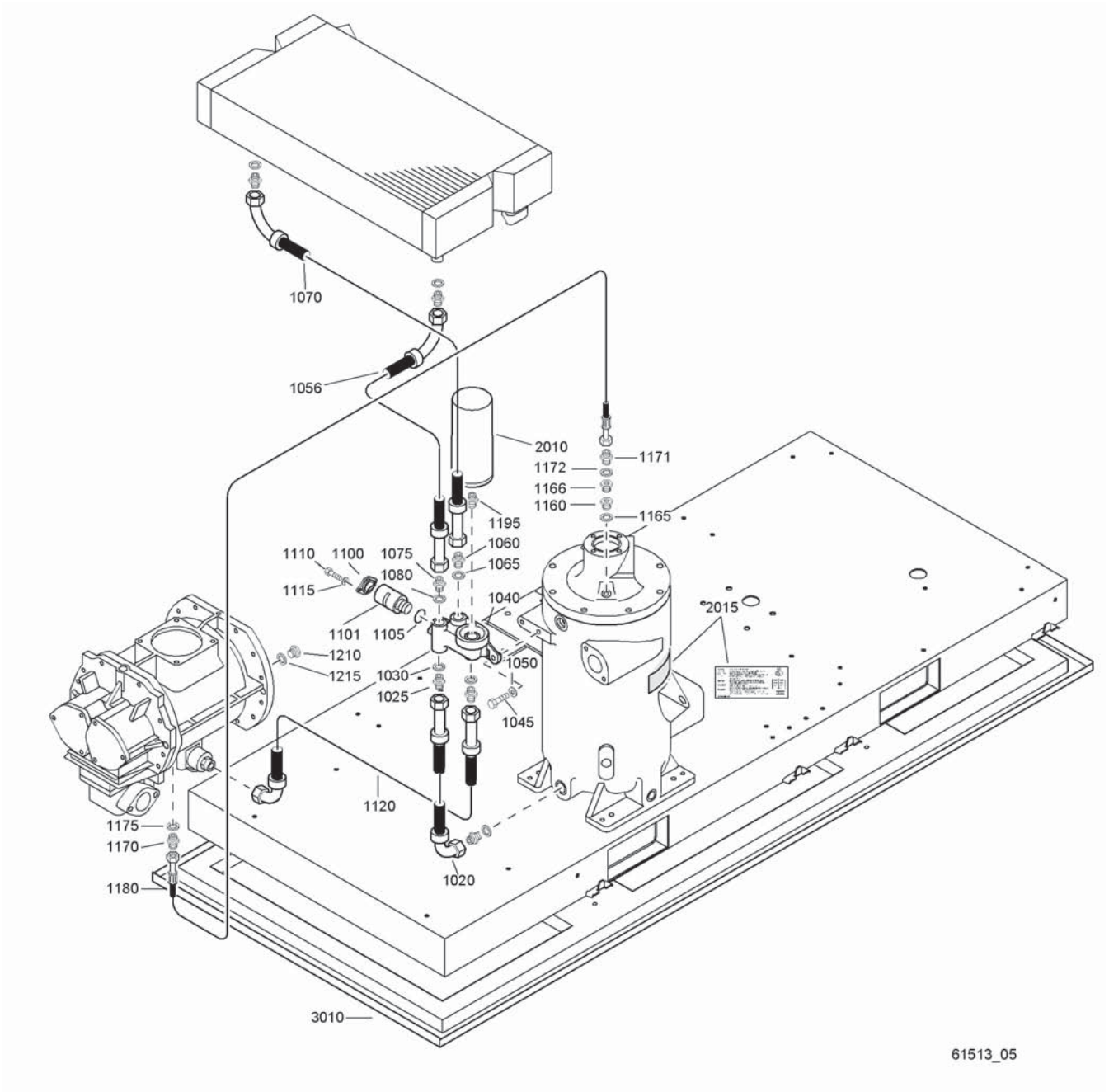
61511_03



Air receiver

Ref.	Part number	Qty	Name	Remarks	Ref.	Part number	Qty	Name	Remarks
1020	1202 9747 00	1	Cover		2030		1	Bushing g3/4-g1	
1025	1613 3220 01	1	Piston			1613 8808 00	1	bar(e)	
1030	0335 3111 00	1	Retaining ring		2035		1	Seal washer	
1035	1614 4662 00	2	Piston ring			0661 1000 43		bar(e)	
1040	0663 3133 00	1	O-ring			1622 0495 99	1	Vessel ass'y	
1045	1612 4048 00	1	Compr.spring		3015	1613 8460 00	• 1	Pipe	
1050	1613 3221 00	1	Piston valve		3020	0580 0402 00	• 1	Pipe coupling	
1055	1613 3223 01	1	Washer		3025	0653 1062 00	• 1	Flat gasket	
1060	1613 3222 00	1	Washer		3030	1613 8103 00	• 1	Bushing	
1065	0147 1244 03	1	Hexagon bolt		3035	1613 8399 00	• 1	Shield	
1070	1612 4049 00	1	Compr.spring		3040	1613 8397 00	• 1	Oil separator	
1075	0663 7136 00	1	O-ring		3045	1616 5108 00	• 1	Level gauge	
1080	0147 1362 03	4	Hexagon bolt		3050	1619 5509 00	• 1	Nipple	
1085	0301 2344 00	4	Washer		3055	0661 1000 43	• 1	Seal washer	
1110	0603 4105 03	1	Hexagon nipple			1613 9665 99	• 1	Oil separator	
1130	1613 8430 00	4	Antivibration pad		4020	1613 6790 01	•• 1	Valve housing	
1135	0301 2335 00	4	Washer		4025	0147 1958 86	•• 8	Hexagon bolt	
1140	0291 1110 00	4	Lock nut		4030	0663 7168 00	•• 2	O-ring	
1190	1613 7679 00	1	Bushing		4035	1622 0003 00	•• 1	Dataplate	
1195	0661 1000 43	1	Seal washer		4040	0244 4184 00	•• 4	Drive screw	
1200	0147 1962 72	1	Hexagon bolt		4045	1613 9665 00	•• 1	Vessel	
1201	0333 3227 00	2	Lock washer		4050	1202 8992 00	•• 1	Plug	
1205	1613 8967 02	1	Cable		4055	0663 2102 15	•• 1	O-ring	
2025		1	Safety valve		4060	0686 3716 02	•• 1	Hexagon plug	
	0830 1008 40		175psi		4065	0661 1000 39	•• 1	Seal washer	
	0832 1000 79		13bar(e)		4070	1622 0001 00	•• 1	Plug	
					4075	0663 2111 18	•• 1	O-ring	

7

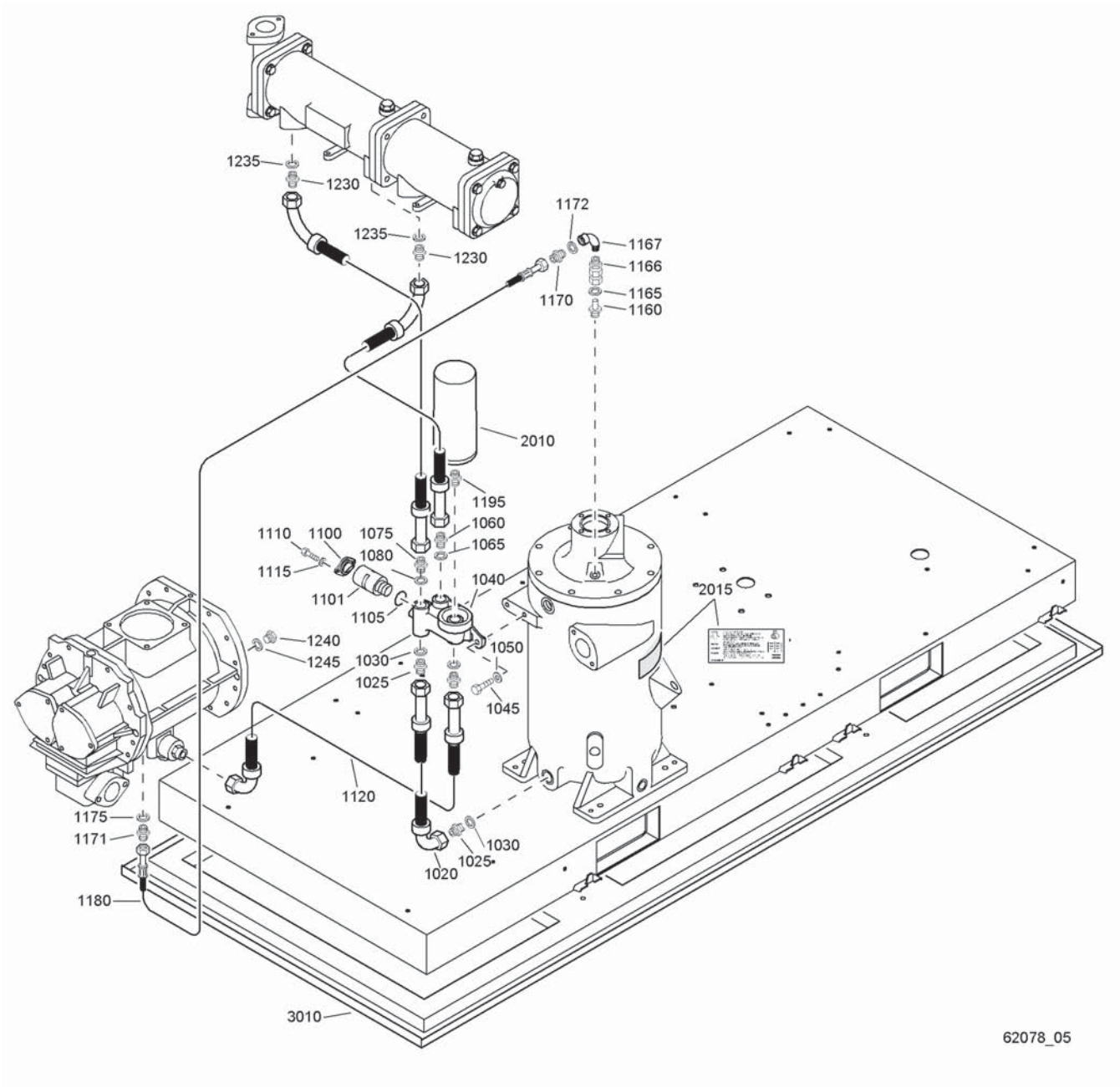


61513_05

Oil system - GA37 VSD, GA45 VSD, GA50 VSD, GA55 VSD

Ref.	Part number	Qty	Name	Remarks	Ref.	Part number	Qty	Name	Remarks
1020	0574 9918 02	1	Hose assembly		1120	0574 9911 05	1	Hose assembly	
1025	1619 5509 00	2	Nipple		1160	1613 8893 00	1	Nozzle	
1030	0661 1000 43	2	Seal washer		1165	0653 1062 00	1	Flat gasket	
1040	1613 6883 03	1	Valve housing		1166	1619 6510 00	1	Non return valve	
1045	0147 1360 03	2	Hexagon bolt		1170	0571 0035 14	1	Hexagon nipple	
1050	0301 2344 00	2	Washer		1171	1079 5840 19	1	Nipple	
1056		1	Hose assembly		1172	0661 1000 39	1	Seal washer	
	0574 9911 03		GA37 VSD, GA45 VSD		1175	0653 1062 00	1	Flat gasket	
	0574 9911 06		GA50 VSD, GA55 VSD		1180	0574 9911 01	1	Hose assembly	
1060	1619 5509 00	1	Nipple		1195	1619 3770 00	1	Nipple	
1065	0661 1000 43	1	Seal washer		1210	0686 3716 01	1	Hexagon plug	
1070	0574 9910 06	1	Hose assembly		1215	0661 1000 38	1	Seal washer	
1075	1619 5509 00	1	Nipple		2010		1	Oil filter	
1080	0661 1000 43	1	Seal washer			1202 8040 01		HD-Rotofluid Plus	
1100	1614 6118 00	1	Flange			1613 6105 00		Roto injectfluid	
1101	1613 7064 01	1	Thermostat 60°C		2015		1	Label	
1105	0663 2101 95	1	O-ring			1079 9909 57		Roto injectfluid	
1110	0147 1246 03	2	Hexagon bolt			1079 9920 76		HD-Rotofluid Plus	
1115	0301 2321 00	2	Washer					Standard option	
					3010	1613 9956 00	1	Oil containing frame	

8



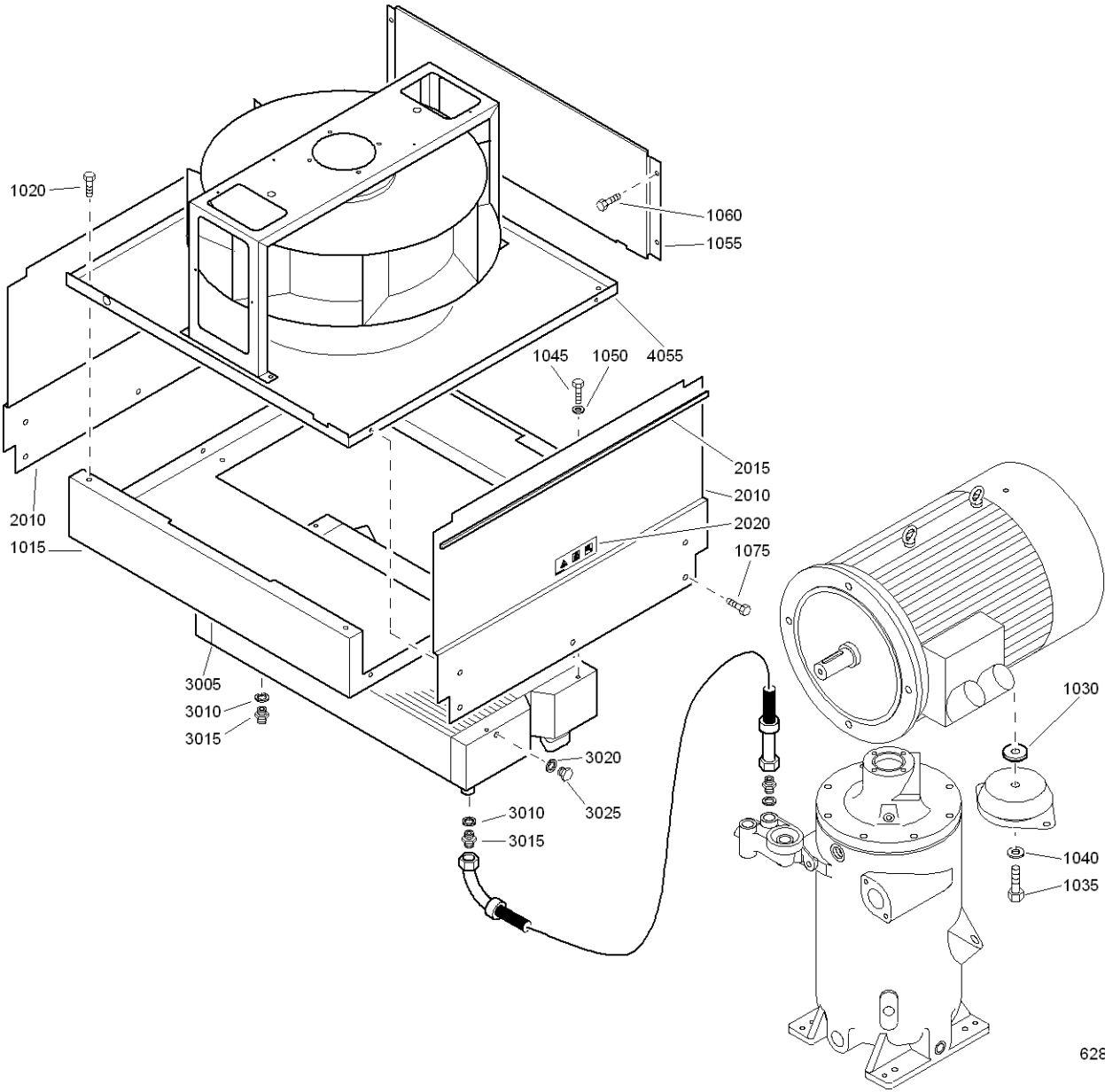
62078_05

Oil system - GA50 W VSD, GA55 W VSD

8

Ref.	Part number	Qty	Name	Remarks	Ref.	Part number	Qty	Name	Remarks
1020	0574 9918 02	1	Hose assembly		1167	1503 2565 02	1	Bend	
1025	1619 5509 00	2	Nipple		1170	0571 0035 14	1	Hexagon nipple	
1030	0661 1000 43	2	Seal washer		1171	1079 5840 19	1	Nipple	
1040	1613 6883 03	1	Valve housing		1172	0661 1000 39	1	Seal washer	
1045	0147 1360 03	2	Hexagon bolt		1175	0653 1062 00	1	Flat gasket	
1050	0301 2344 00	2	Washer		1180	0574 9911 01	1	Hose assembly	
1060	1619 5509 00	1	Nipple		1195	1619 3770 00	1	Nipple	
1065	0661 1000 43	1	Seal washer		1230	1619 5509 00	2	Nipple	
1075	1619 5509 00	1	Nipple		1235	0661 1000 43	2	Seal washer	
1080	0661 1000 43	1	Seal washer		1240	0686 3716 01	1	Hexagon plug	
1100	1614 6118 00	1	Flange		1245	0661 1000 38	1	Seal washer	
1101	1613 7064 01	1	Thermostat 60°C		2010		1	Oil filter	
1105	0663 2101 95	1	O-ring			1202 8040 01		HD-Rotofluid Plus	
1110	0147 1246 03	2	Hexagon bolt			1613 6105 00		Roto injectfluid	
1115	0301 2321 00	2	Washer		2015		1	Label	
1120	0574 9911 05	1	Hose assembly			1079 9909 57		Roto injectfluid	
1160	1613 8893 00	1	Nozzle			1079 9920 76		HD-Rotofluid Plus	
1165	0653 1062 00	1	Flat gasket					Standard option	
1166	1619 6510 00	1	Non return valve		3010	1613 9956 00	1	Oil containing frame	

9



62875_04

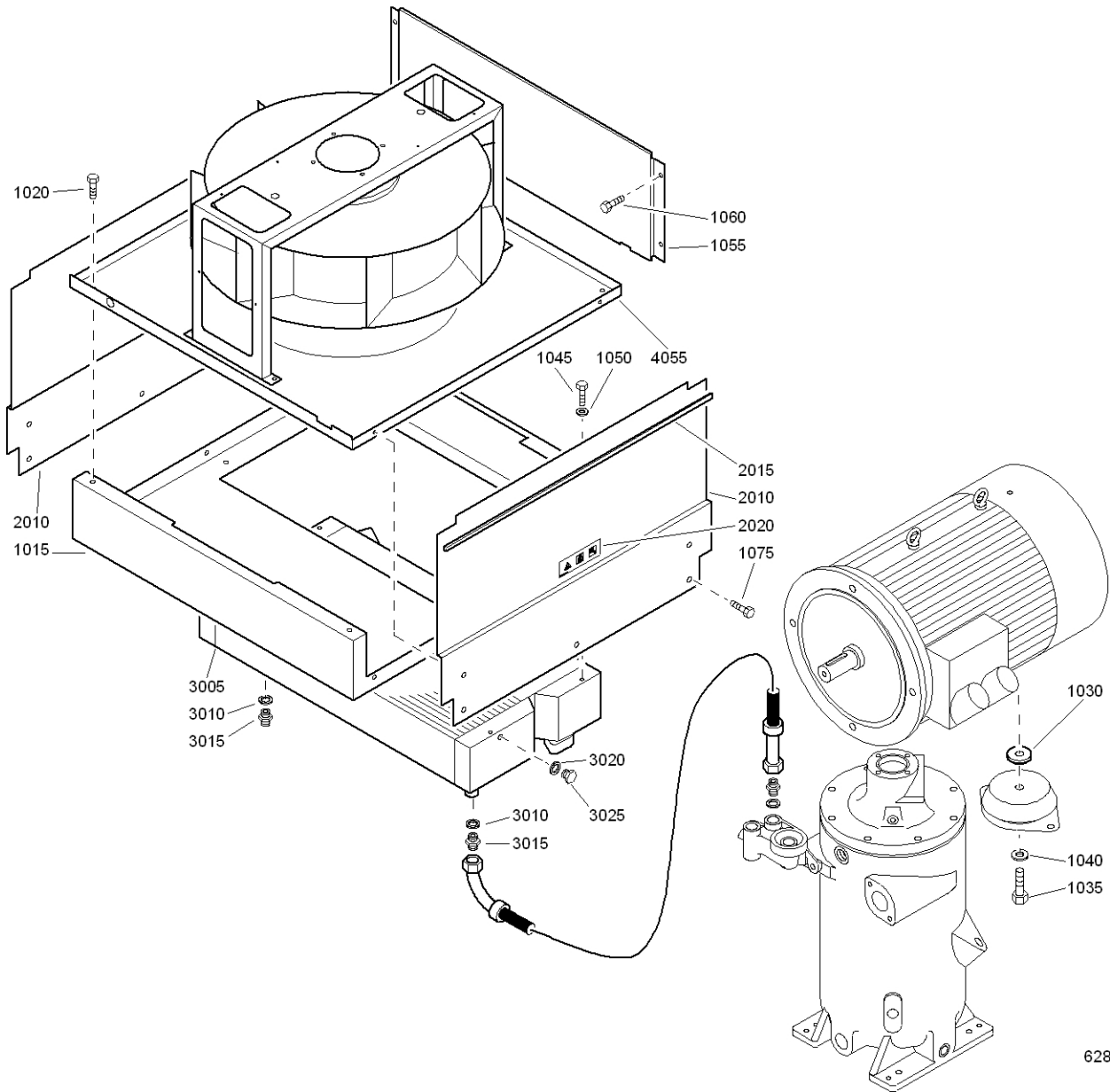
Coolers - GA37 VSD, GA45 VSD, GA50 VSD, GA55 VSD - 1)

9

Ref.	Part number	Qty	Name	Remarks	Ref.	Part number	Qty	Name	Remarks
1015	1613 9887 00 1613 9885 00	1	Support GA37 VSD GA45 VSD, GA50 VSD, GA55 VSD		3020	0653 1062 00 •	1	Flat gasket	
					3025	0686 3716 01 •	1	Hexagon plug	
					4055		1	Fan assy	
1020	0147 1962 72	4	Hexagon bolt			1613 8532 06		200V-50Hz	
1030	1613 9912 01	1	Spacer			1613 8532 01		230V/400V-50Hz	
1035	0147 1484 03	1	Hexagon bolt			1613 8491 01		230V/380-460V/50-60Hz	
1040	0301 2378 00	1	Washer			1613 8532 12		200V/60Hz-CSA/UL	
1045	0147 1322 03	6	Hexagon bolt			1613 8532 10		220-230/440-460V/60Hz- CSA/UL	
1050	0301 2335 00	6	Washer			1613 8491 02		500/575V-50/60Hz	
1055	1613 9890 00	1	Baffle						
1060	0147 1962 72	4	Hexagon bolt		1)			Up to serial No. :	
1075	0147 1962 72	10	Hexagon bolt					Tot serienummer:	
	1613 9891 80	2	Baffle assembly					T.o.m. tillverkningsnummer:	
2010	1613 9891 00 •	1	Baffle					Bis Seriennummer:	
2015	1619 3843 00 •	AR	Seal					Jusqu'au numéro de série:	
2020	1079 9901 18 •	1	Warning label					Hasta el número de serie:	
	1613 8365 00	1	Cooler					Fino al numeri di serie:	
	1613 8364 00		GA37 VSD GA45 VSD, GA50 VSD, GA55 VSD					Gælder til følgende serienumre:	
3005		• 1	Cooler					Até o número de série:	
3010	0661 1038 00 •	2	Sealing washer					Til følgende serienummer:	
3015	1619 5509 00 •	2	Nipple					Seuraavaan valmistusnumeroon asti, No.:	
								API-569 999	



10



62875_04

Coolers - GA37 VSD, GA45 VSD, GA50 VSD, GA55 VSD - 2)

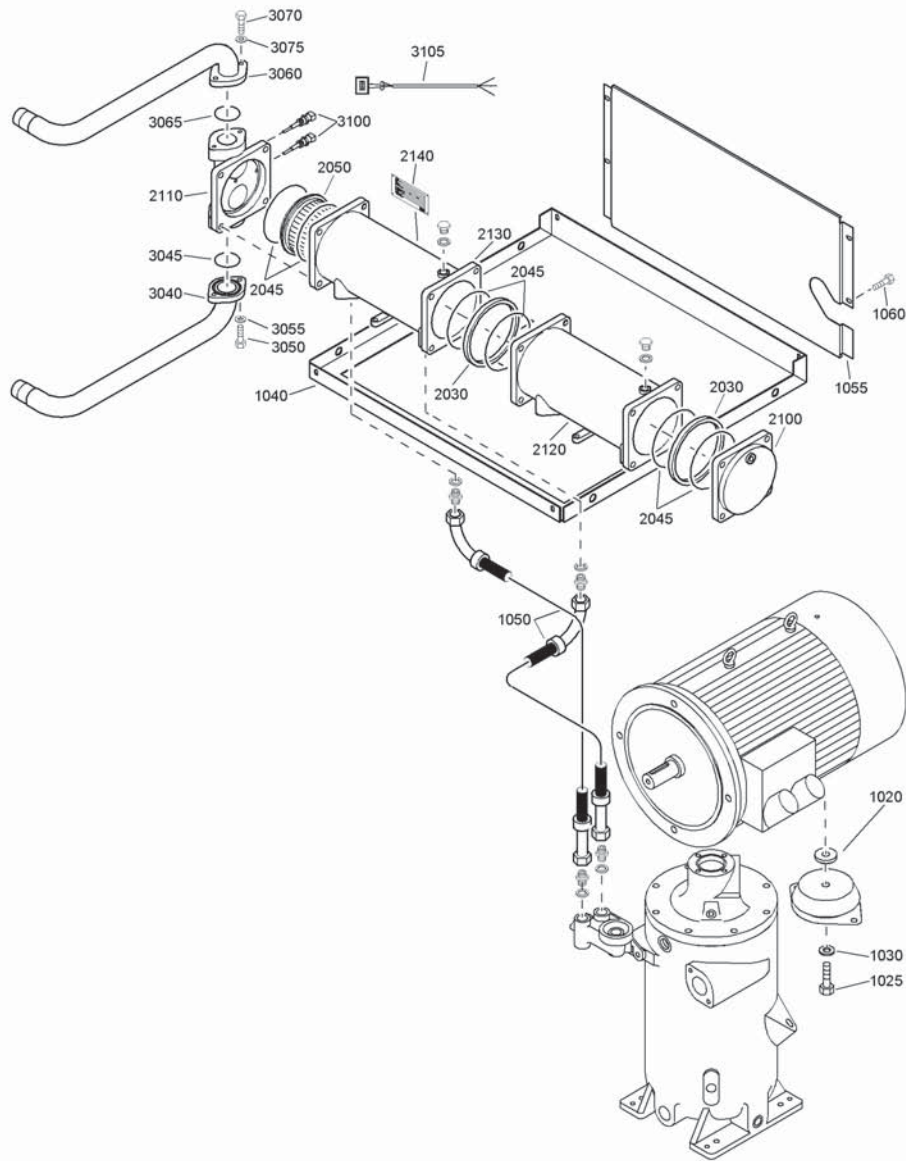
10

Ref.	Part number	Qty	Name	Remarks	Ref.	Part number	Qty	Name	Remarks
1015	1613 9887 00 1613 9885 00	1	Support GA37 VSD GA45 VSD, GA50 VSD, GA55 VSD		4055	1613 8532 06 1613 8532 01 1613 8532 02 1613 8532 12	1	Fan assy 200V/50Hz 400V/50Hz 500V/50Hz 200V/60Hz-CSA/UL	GA37 VSD GA37 VSD GA37 VSD GA37 VSD
1020	0147 1962 72	4	Hexagon bolt					380V/60Hz-CSA/UL GA37 VSD	
1030	1613 9912 01	1	Spacer					460V/60Hz-CSA/UL GA37 VSD	
1035	0147 1484 03	1	Hexagon bolt		1613 8532 10			460V/60Hz-CSA/UL GA37 VSD	
1040	0301 2378 00	1	Washer					460V/60Hz-CSA/UL GA45 VSD	
1045	0147 1322 03	6	Hexagon bolt		1613 8532 10			400V/50Hz 380V/60Hz 460V/60Hz 460V/60Hz	GA50 VSD GA50 VSD GA50 VSD GA55 VSD
1050	0301 2335 00	6	Washer		1613 8491 11			575V/60Hz	GA50 VSD
1055	1613 9890 00	1	Baffle		1613 8491 11				
1060	0147 1962 72	4	Hexagon bolt		1613 8491 11				
1075	0147 1962 72	10	Hexagon bolt		1613 8491 11				
	1613 9891 80	2	Baffle assembly		1613 8491 12				
2010	1613 9891 00	• 1	Baffle						
2015	1619 3843 00	• AR	Seal						
2020	1079 9901 18	• 1	Warning label						
	1613 8365 00	1	Cooler						
	1613 8364 00		GA37 VSD GA45 VSD, GA50 VSD, GA55 VSD		2)				From following serial No. onwards: Geldig vanaf volgend serienummer: Fr.o.m. tillverkningsnummer: Gültig ab Seriennummer: Valable à partir du numéro de série suivant: A partir del siguiente número de serie: Dai seguenti numeri di serie in avanti: Gælder fra følgende serienumre: A partir do número de série: Fra og med følgende serienummer: Alkaen valmistusnumerosta API-570 000
3005		• 1	Cooler						
3010	0661 1038 00	• 2	Sealing washer						
3015	1619 5509 00	• 2	Nipple						
3020	0653 1062 00	• 1	Flat gasket						
3025	0686 3716 01	• 1	Hexagon plug						



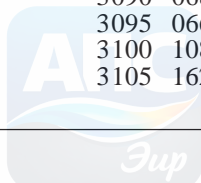
11

Coolers - GA50 W VSD, GA55 W VSD



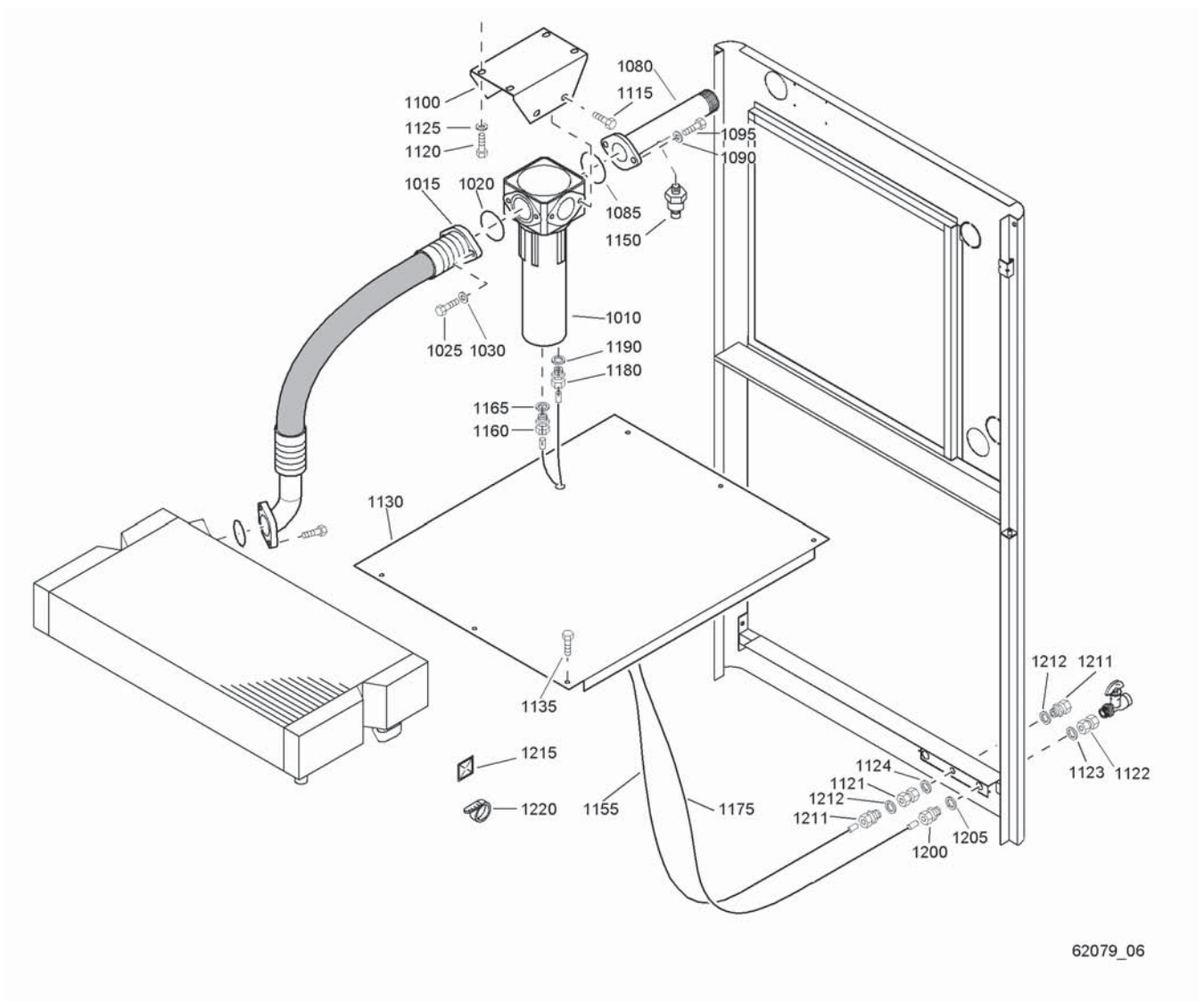
62075_04

Ref.	Part number	Qty	Name	Remarks	Ref.	Part number	Qty	Name	Remarks
1020	1613 9912 01	1	Spacer		2140	9820 3567 00	1	Instr.data plate	
1025	0147 1484 03	1	Hexagon bolt		3040	1622 0195 00	1	Waterpipe (inlet)	
1030	0301 2378 00	1	Washer		3045	0663 7135 00	1	O-ring	
1040	1622 0184 00	1	Plate		3050	0147 1401 03	2	Hexagon bolt	
1050	0574 9910 06	2	Hose assembly		3055	0301 2358 00	2	Washer	
1055	1622 0197 00	1	Baffle		3060	1622 0196 00	1	Water pipe (outlet)	
1060	0147 1962 72	4	Hexagon bolt		3065	0663 7135 00	1	O-ring	
	1622 0182 00	1	Combi cooler		3070	0147 1401 03	2	Hexagon bolt	
2030	1614 6257 00	2	Ring		3075	0301 2358 00	2	Washer	
2045	1614 6256 00	6	O-ring		3080	0686 3716 01	2	Hexagon plug	
2050		1	Tubestack		3085	0661 1000 38	2	Seal washer	
2100		1	Return box		3090	0686 3716 30	1	Hexagon plug	
2110		1	Water box		3095	0661 1000 40	1	Seal washer	
2120		1	Cylinder		3100	1089 0574 40	2	Temp.sensor	
2130		1	Cylinder		3105	1622 0663 01	2	Cable temp.sensor	



Air outlet - WorkPlace - GA37 VSD, GA45 VSD, GA50 VSD, GA55 VSD

12



62079_06

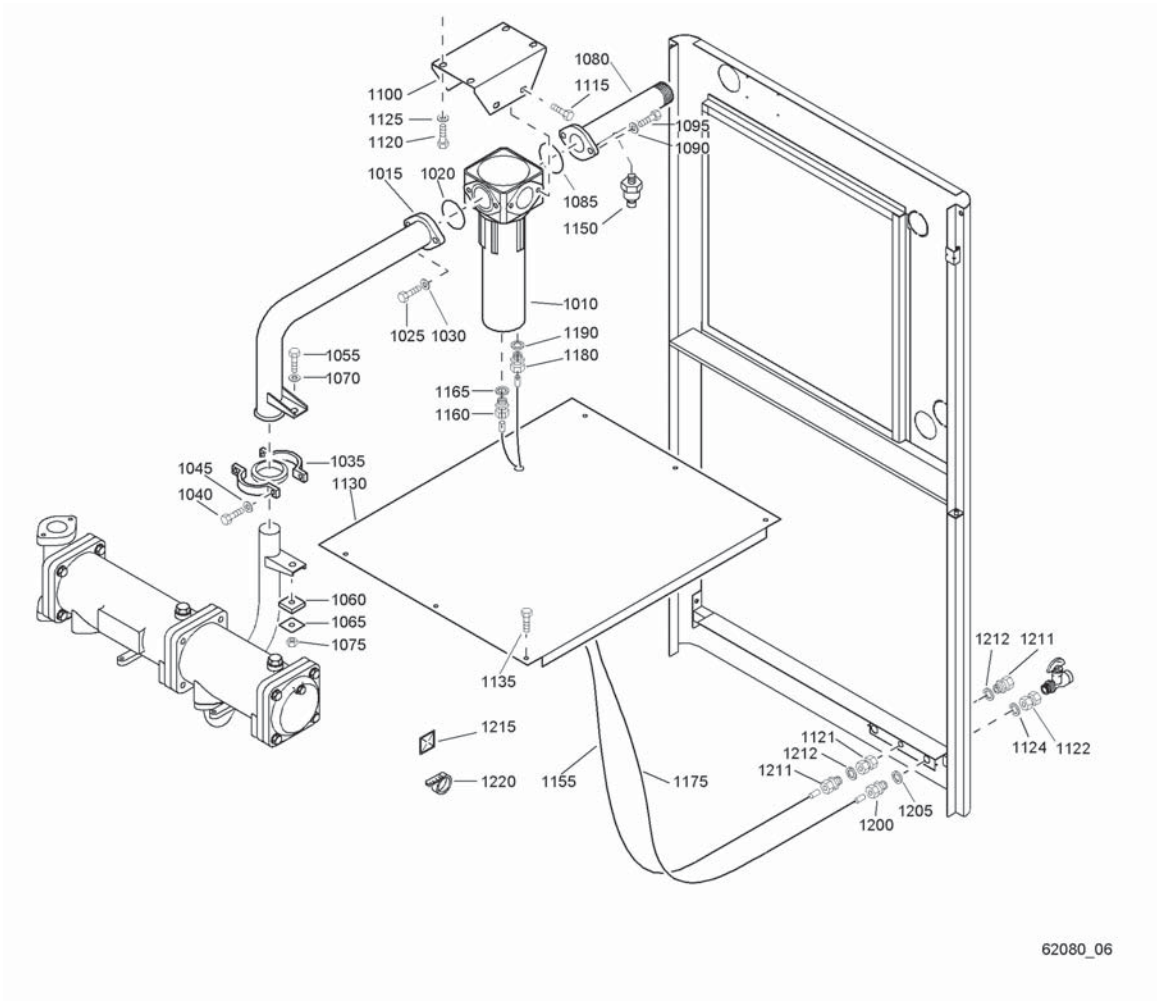
62079_06

Ref.	Part number	Qty	Name	Remarks	Ref.	Part number	Qty	Name	Remarks
1010	1613 9356 80	1	Wsd80		1130	1613 8392 80	1	Baffle assembly 1)	
	0663 2111 80	• 1	O-ring		1135	0147 1962 72	4	Hexagon bolt	
	4090 0309 00	• 1	O-ring		1150	1089 0575 51	1	Press.transducer	
	0663 2107 81	• 1	O ring		1155	0070 6002 05	AR	Plastic tube	
	0663 2111 27	• 1	O-ring 31.5x3		1160	0581 0000 35	1	Coupling	
1015	1613 9916 00	1	Hose assembly		1165	0661 1000 38	1	Seal washer	
1020	0663 7136 00	1	O-ring		1175	0070 6002 04	AR	Plastic tube	
1025	0147 1363 03	2	Hexagon bolt		1180	0581 0000 34	1	Coupling	
1030	0301 2344 00	2	Washer		1190	0661 1000 38	1	Seal washer	
1080	1613 8374 00	1	Pipe		1200	0581 0000 33	1	Coupling	
1085	0663 7136 00	1	O-ring		1205	0653 1046 00	1	Flat gasket	
1090	0301 2344 00	2	Washer		1211	0581 0000 35	1	Coupling	
1095	0147 1363 03	2	Hexagon bolt		1212	0661 1000 38	1	Seal washer	
1100	1613 9906 00	1	Bracket		1215	1088 1305 02	6	Push mount	
1115	0147 1962 72	4	Hexagon bolt		1220	1088 1301 01	8	Cable strip	
1120	0147 1360 03	4	Hexagon bolt		1225	0147 1962 72	2	Hexagon bolt	
1121	0581 0000 87	1	Pipe coupling						
1122	0581 0000 43	1	Coupling						
1123	0653 1100 00	1	Flat gasket						
1124	0653 1128 00	1	Cu washer						
1125	0301 2344 00	4	Washer						

1) Lined with / Bekleed met / Beklädd med / Ausgekleidet mit / Garnir de / Rivestido de / Allineato con / Foret med / Revestido com / Kledd med / Vuorattu :
Foam: 0395 6001 67 (AR) 30 x 2040 x 1650



13



Air outlet - WorkPlace - GA50 W VSD, GA55 W VSD

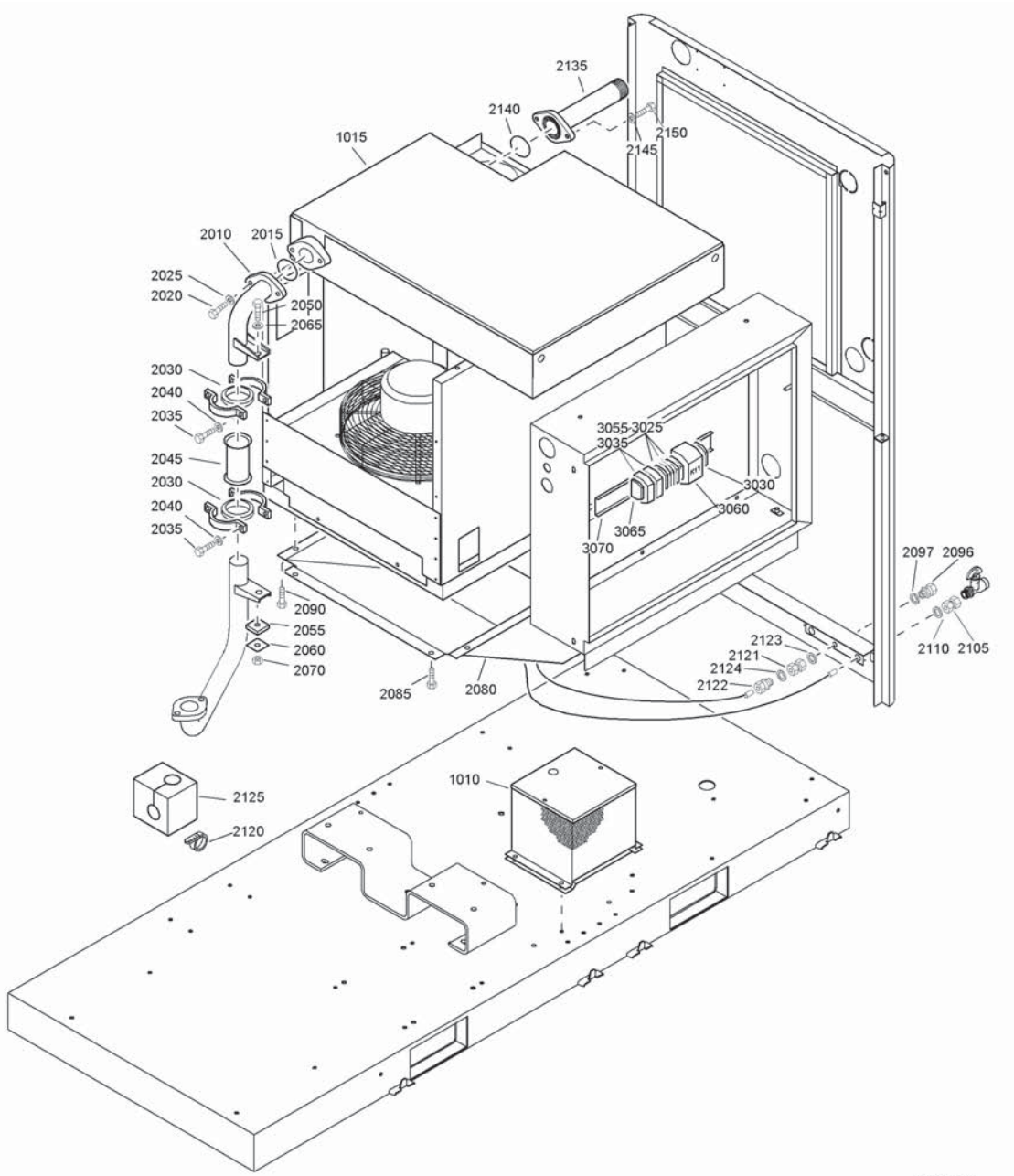
13

Ref.	Part number	Qty	Name	Remarks	Ref.	Part number	Qty	Name	Remarks
1010	1613 9356 80	1	Wsd80		1122	0581 0000 43	1	Coupling	
	0663 2111 80	• 1	O-ring		1123	0653 1128 00	1	Cu washer	
	4090 0309 00	• 1	O-ring		1124	0653 1100 00	1	Flat gasket	
	0663 2107 81	• 1	O ring		1125	0301 2344 00	4	Washer	
	0663 2111 27	• 1	O-ring 31.5x3		1130	1613 8392 80	1	Baffle assembly 1)	
1015	1613 9924 00	1	Pipe		1135	0147 1962 72	4	Hexagon bolt	
1020	0663 7136 00	1	O-ring		1150	1089 0575 51	1	Press.transduce	
1025	0147 1363 03	2	Hexagon bolt		1155	0070 6002 05	AR	Plastic tube	
1030	0301 2344 00	2	Washer		1160	0581 0000 35	1	Coupling	
1035	1613 8377 81	1	Joint set		1165	0661 1000 38	1	Seal washer	
	1613 8377 00	• 1	Joint		1175	0070 6002 04	AR	Plastic tube	
1040	0147 1960 44	2	Hexagon bolt		1180	0581 0000 34	1	Coupling	
1045	0301 2335 00	2	Washer		1190	0661 1000 38	1	Seal washer	
1055	0147 1379 03	1	Hexagon bolt		1200	0581 0000 33	1	Coupling	
1060	1613 8451 02	1	Antivibration pad		1205	0653 1046 00	1	Flat gasket	
1065	1613 8452 00	1	Washer		1211	0581 0000 35	1	Coupling	
1070	0301 2344 00	1	Washer		1212	0661 1000 38	1	Seal washer	
1075	0291 1111 00	1	Lock nut		1215	1088 1305 02	6	Push mount	
1080	1613 8374 00	1	Pipe		1220	1088 1301 01	8	Cable strip	
1085	0663 7136 00	1	O-ring		1225	0147 1962 72	2	Hexagon bolt	
1090	0301 2344 00	2	Washer						
1095	0147 1363 03	2	Hexagon bolt						
1100	1613 9906 00	1	Bracket						
1115	0147 1962 72	4	Hexagon bolt						
1120	0147 1360 03	4	Hexagon bolt						
1121	0581 0000 87	1	Pipe coupling						

1) Lined with / Bekleed met / Beklädd med / Ausgekleidet mit / Garnir de / Rivestido de / Allineato con / Foret med / Revestido com / Kledd med / Vuorattu :
Foam: 0395 6001 67 (AR) 30 x 2040 x 1650



14



62085_17

Air outlet - WorkPlace FF - 1)

Ref.	Part number	Qty	Name	Remarks	Ref.	Part number	Qty	Name	Remarks
1010		1	Trafo assembly		2105	0581 0000 33	1	Coupling	
	1617 1998 84		GA37 VSD 460V/60Hz		2110	0653 1046 00	1	Flat gasket	
	1617 1998 87		GA37 VSD 460V/60Hz		2120	1088 1301 01	2	Cable strip	
			C, U		2121	0581 0000 87	1	Pipe coupling	
	1617 1998 89		GA37 VSD 380V/60Hz		2122	0581 0000 43	1	Coupling	
	1617 1998 93		GA50 VSD 575V/60Hz		2123	0653 1128 00	1	Cu washer	
			C, U		2124	0653 1100 00	1	Flat gasket	
	1617 1998 92		GA45 VSD 460V/60Hz		2125	1613 8729 00	1	Silencing foam	
			C, U		2135	1617 2120 00	1	Connector	
			GA50 VSD 460V/60Hz		2140	0663 2104 75	1	O-ring	
			C, U		2145	0301 2335 00	2	Washer	
			GA55 VSD 460V/60Hz		2150	0147 1326 03	2	Hexagon bolt	
			C, U				1	Dryer rail	
			Transformer			1900 2031 99		CSA/UL	
	1089 9437 13	• 1	GA45 VSD 460V/60Hz			1900 2031 98		IEC	
			C, U		3025		•	Terminal	
			GA50 VSD 460V/60Hz			1089 0506 60	4		
			C, U			1089 0506 28	1		
			GA55 VSD 460V/60Hz			1089 0506 05	1	IEC	
			C, U			1089 0506 06	1	IEC	
	1089 9437 14		GA50 VSD 575V/60Hz		3030	1089 0506 23	• 1	Barrier	
			C, U		3035	1089 0612 01	• 2	Fuse holder	
1015	<<< >>>	1	Dryer		3055		• 2	Fuse	
2010	1613 9918 00	1	Pipe			1089 9168 61		C, U	
2015	0663 7136 00	1	O-ring			1089 0612 29		IEC	
2020	0147 1364 03	2	Hexagon bolt		3060	1089 9415 25	• 1	Contactora	
2025	0301 2344 00	2	Washer		3065	1089 0506 30	• 1	End bracket	
2030	1613 8377 81	2	Joint set		3070	9139 5000 16	• AR	Rail	
	1613 8377 00	• 1	Joint						
2035	0147 1960 44	4	Hexagon bolt		1)	Up to serial No. :			
2040	0301 2335 00	4	Washer			Tot serienummer:			
2045	1613 8375 00	1	Pipe			T.o.m. tillverkningsnummer:			
2050	0147 1962 69	1	Hexagon bolt			Bis Seriennummer:			
2055	1613 8451 02	1	Antivibration pad			Jusqu'au numéro de série:			
2060	1613 8452 00	1	Washer			Hasta el número de serie:			
2065	0301 2344 00	1	Washer			Fino al numeri di serie:			
2070	0291 1111 00	1	Lock nut			Gælder til følgende serienumre:			
2080	1613 9893 00	1	Duct			Até o número de série:			
2085	0147 1962 72	4	Hexagon bolt			Til følgende serienummer:			
2090	0147 1962 72	4	Hexagon bolt			Seuraavaan valmistusnumeroon asti, No.:			
2096	0581 0000 35	1	Coupling			API-569 999			
2097	0661 1000 38	1	Seal washer						

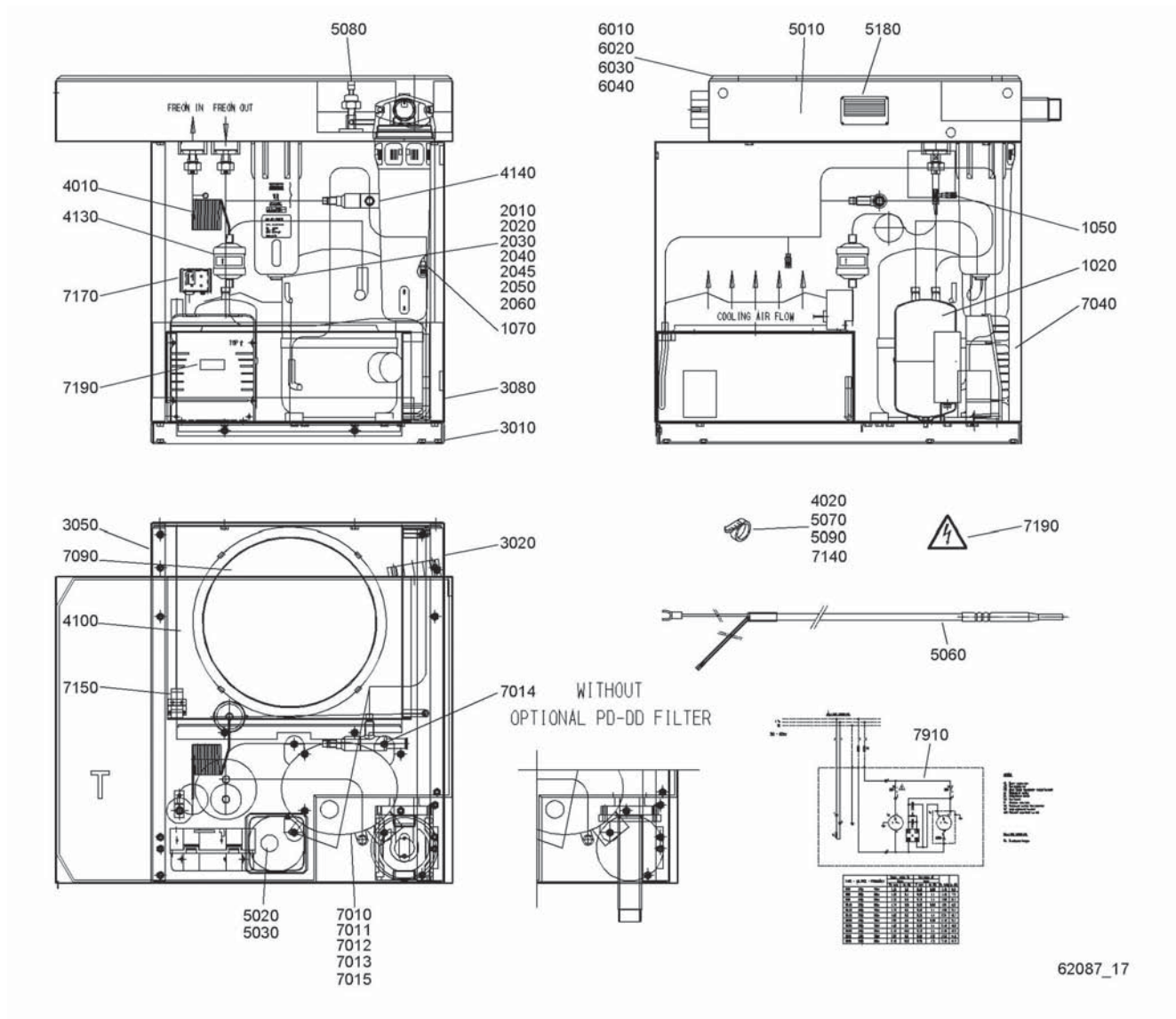


Air outlet - WorkPlace FF - 2)

Ref.	Part number	Qty	Name	Remarks	Ref.	Part number	Qty	Name	Remarks
		1	Trafo assembly		2123	0653 1128 00	1	Cu washer	
	1900 2602 22		400V, 500V		2124	0653 1100 00	1	Flat gasket	
	1900 2602 23		380V, 440V, 460V		2125	1613 8729 00	1	Silencing foam	
	1900 2602 24		575V		2135	1617 2120 00	1	Connector	
1005		• 1	Autotransformer		2140	0663 2104 75	1	O-ring	
	1089 9437 12		400V, 500V		2145	0301 2335 00	2	Washer	
	1089 9437 13		380V, 440V, 460V		2150	0147 1326 03	2	Hexagon bolt	
	1089 9437 14		575V				1	Dryer rail	
1010		• 1	Fuse link			1900 2031 98		IEC	
	1089 9168 60		400V, 500V			1900 2031 99		CSA/UL	
	1089 9168 61		380V, 440V, 460V		3025		• 1	Terminal	
	1089 9168 61		575V			1089 0506 05		IEC	
1015	<<< >>>	1	Dryer		3030	1089 0506 06	• 1	Terminal	
2010	1613 9918 00	1	Pipe		3045	1089 0506 28	• 1	Terminal	
2015	0663 7136 00	1	O-ring		3050	1089 0612 01	• 2	Fuse holder	
2020	0147 1364 03	2	Hexagon bolt		3055		• 2	Fuse link	
2025	0301 2344 00	2	Washer			1089 0612 29		IEC	
2030	1613 8377 81	2	Joint set			1089 9168 61		CSA/UL	
	1613 8377 00	• 1	Joint		3060	1089 9415 25	• 1	Contacto	
2035	0147 1960 44	4	Hexagon bolt		3065	1089 0506 30	• 1	End bracket	
2040	0301 2335 00	4	Washer		3070	9139 5000 16	• AR	Rail	
2045	1613 8375 00	1	Pipe		3075	1088 0031 75	• 1	Connector 2pole	
2050	0147 1962 69	1	Hexagon bolt		3080	1088 0037 22	• 1	Connector 2pole	
2055	1613 8451 02	1	Antivibration pad		3085	1088 0038 01	• 1	Connector 5pole	
2060	1613 8452 00	1	Washer		3090	1088 0038 02	• 4	Pin for connect	
2065	0301 2344 00	1	Washer						
2070	0291 1111 00	1	Lock nut		2)				From following serial No. onwards:
2080	1613 9893 00	1	Duct						Geldig vanaf volgend serienummer:
2085	0147 1963 08	4	Hexagon bolt						Fr.o.m. tillverkningsnummer:
2090	0147 1963 08	4	Hexagon bolt						Gültig ab Seriennummer:
2096	0581 0000 35	1	Coupling						Valable à partir du numéro de série suivant:
2097	0661 1000 38	1	Seal washer						A partir del siguiente número de serie:
2105	0581 0000 33	1	Coupling						Dai seguenti numeri di serie in avanti:
2110	0653 1046 00	1	Flat gasket						Gælder fra følgende serienummer:
2120	1088 1301 01	2	Cable strip						A partir do número de série:
2121	0581 0000 87	1	Pipe coupling						Fra og med følgende serienummer:
2122	0581 0000 43	1	Coupling						Alkaen valmistusnumerosta
									API-570 000



16



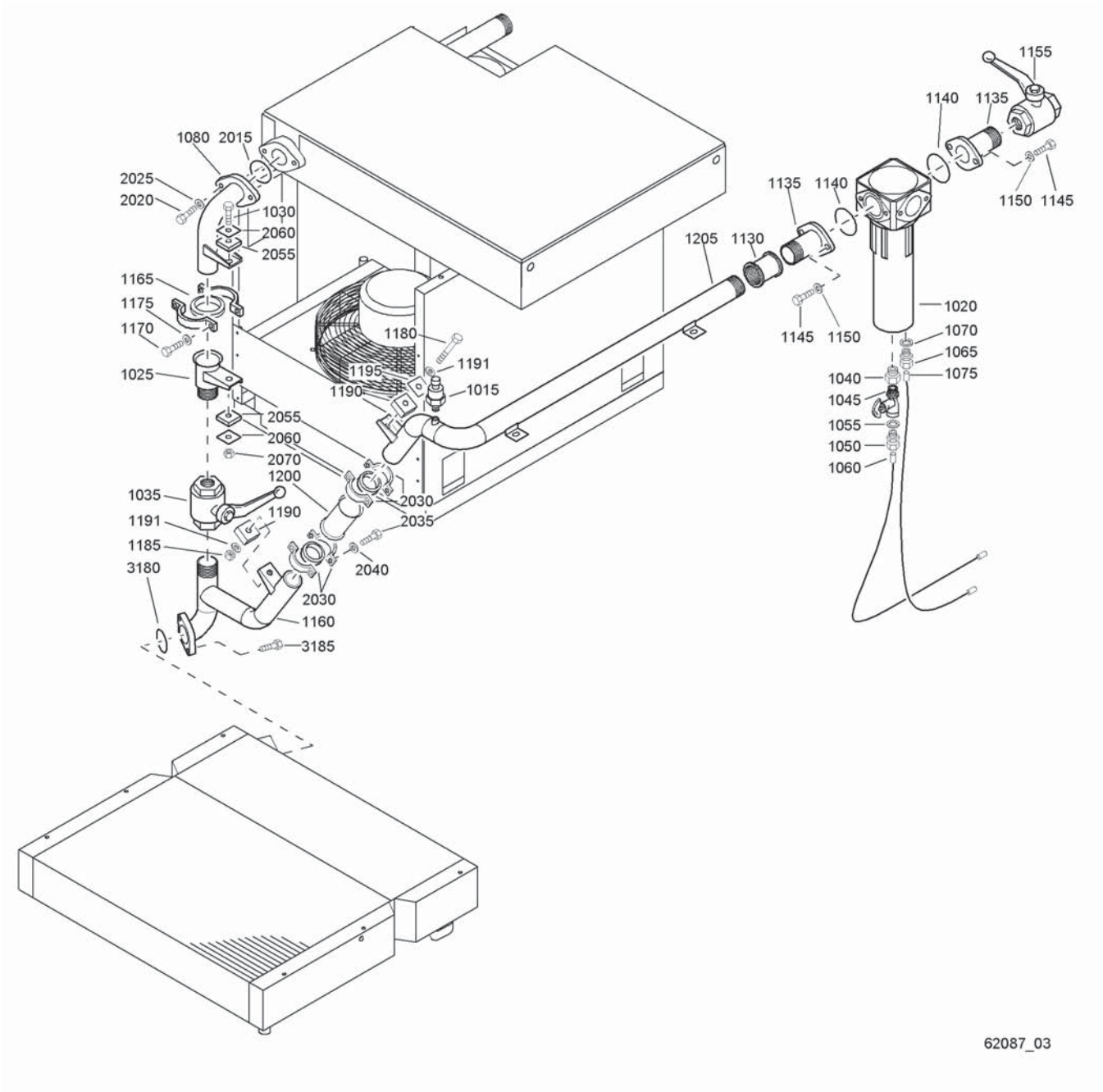
62087_17



Air dryer - WorkPlace FF

Ref.	Part number	Qty	Name	Remarks	Ref.	Part number	Qty	Name	Remarks
	8092 2431 31	1	Air dryer		6020		• 1	Insulation bottom	
	8092 2431 49		ID110 230V/50Hz			1617 1710 00		ID110	
	8092 2431 56		ID110 200V/50Hz			1617 1958 00		ID150	
	8092 2430 72		ID110 230V/60Hz-CSA/UL		6030		• 1	Insulation top	
	8092 2430 99		ID150 230V/50Hz			1617 1709 00		ID110	
1020	1617 1765 00	1	Liquid separator			1617 1957 00		ID150	
1050	1619 5563 02	1	Schradervalue		6040	1617 1839 00	1	Filling block	
1070	1619 5563 02	1	Schradervalue		7010		1	Refrig. compressor	
2010	0653 1062 00	1	Flat gasket			1617 1494 10		ID110 230V/50Hz	
2020	0661 1020 00	1	Seal washer			1617 1494 11		ID110 230V/60Hz-CSA/UL	
2030	0581 0000 35	1	Straight coupling			1617 1494 13		ID110 200V/50Hz	
2040	0070 6002 05	AR	Plastic tube			1617 1827 01		ID150 230V/50Hz	
2045	0581 0000 34	1	Straight coupling			1617 1827 02		ID150 230V/60Hz-CSA/UL	
2050	0070 6002 04	AR	Plastic tube		7011		• 1	Capacitor	
2060	1088 0801 40	1	Grommet			1617 1549 10		ID110 230V/60Hz-CSA/UL,	
3010	1617 1694 00	1	Frame					ID150 230V/50Hz	
3020	1617 1703 00	1	Support right			1617 1549 07		ID110 230V/50Hz,	
3050	1617 1704 00	1	Support left					ID110 200V/50Hz	
3080	1617 1705 00	1	Plate			1617 1549 12		ID150 230V/60Hz-CSA/UL	
4010		1	Capillary ass'y		7012		• 1	Run capacitor	
	1617 1828 82		ID110			1617 1874 03		ID110,	
	1617 1828 83		ID150					ID150 230V/60Hz-CSA/UL	
4020	0348 0101 13	1	Cable tie			1617 1874 04		ID150 230V/50Hz	
4100		1	Condensor		7013		• 1	Start relay	
	1617 3658 00		ID110			1617 1551 21		ID110 230V/50Hz	
	1617 1838 00		ID150			1617 1551 22		ID110 200V/50Hz	
4130		1	Filter-drier			1617 1551 20		ID110 230V/60Hz-CSA/UL	
	1617 1322 03		ID110			1617 1551 23		ID150 230V/50Hz	
	1617 1322 04		ID150			1617 1551 24		ID150 230V/60Hz-CSA/UL	
4140	1617 1524 02	1	Hgb valve		7014	1617 1530 80	• 1	Anti-vibration set	
5010		1	Heat exchanger		7015		• 1	Overload protector	
	1617 1695 00		ID110			1617 1550 22		ID110 230V/50Hz,	
	1617 1945 00		ID150					ID110 200V/50Hz	
5020	1613 9363 80	1	Wsd80 (16bar)			1617 1550 22		ID110 230V/60Hz-CSA/UL	
	0663 2111 80	• 1	O-ring		7040		1	Electrical box	
	4090 0309 00	• 1	O-ring			1617 2028 00		ID150	
	0663 2107 81	• 1	O ring		7090		1	Fan ass'y	
	0663 2111 27	• 1	O-ring 31.5x3			1617 1987 80		ID110 230V/50Hz	
5030	0663 7136 00	1	O-ring			1617 1987 80		ID110 230V/60Hz-CSA/UL	
5060	1617 3077 83	1	Sensor			1617 1987 80		ID150 230V/50Hz	
5070	0348 0101 13	1	Cable tie			1617 1987 80		ID150 230V/60Hz-CSA/UL	
5080	1089 0575 51	1	Pressure sensor			1617 2015 80		ID110 200V/50Hz	
5090	0348 0101 13	1	Cable tie				• 1	Fan + motor	
5180	1617 2971 00	1	Data plate			1617 1988 00		ID110-150 230V/50+60Hz	
		1	Box assy			1617 2016 00		ID110-150 200V/50Hz	
	1603 1698 81		ID110			1617 1989 00	• 1	Grating	
	1603 1698 82		ID150		7140	0348 0101 13	1	Cable tie	
6010	1617 1698 00	• 1	Box heat exchanger		7150	1089 9214 40	1	High pressure switch	
					7170	1089 9139 04	1	Fan switch	
					7190	1088 1001 01	1	Warning mark	
					7910	9827 0208 10	1	Service diagram ID	

17



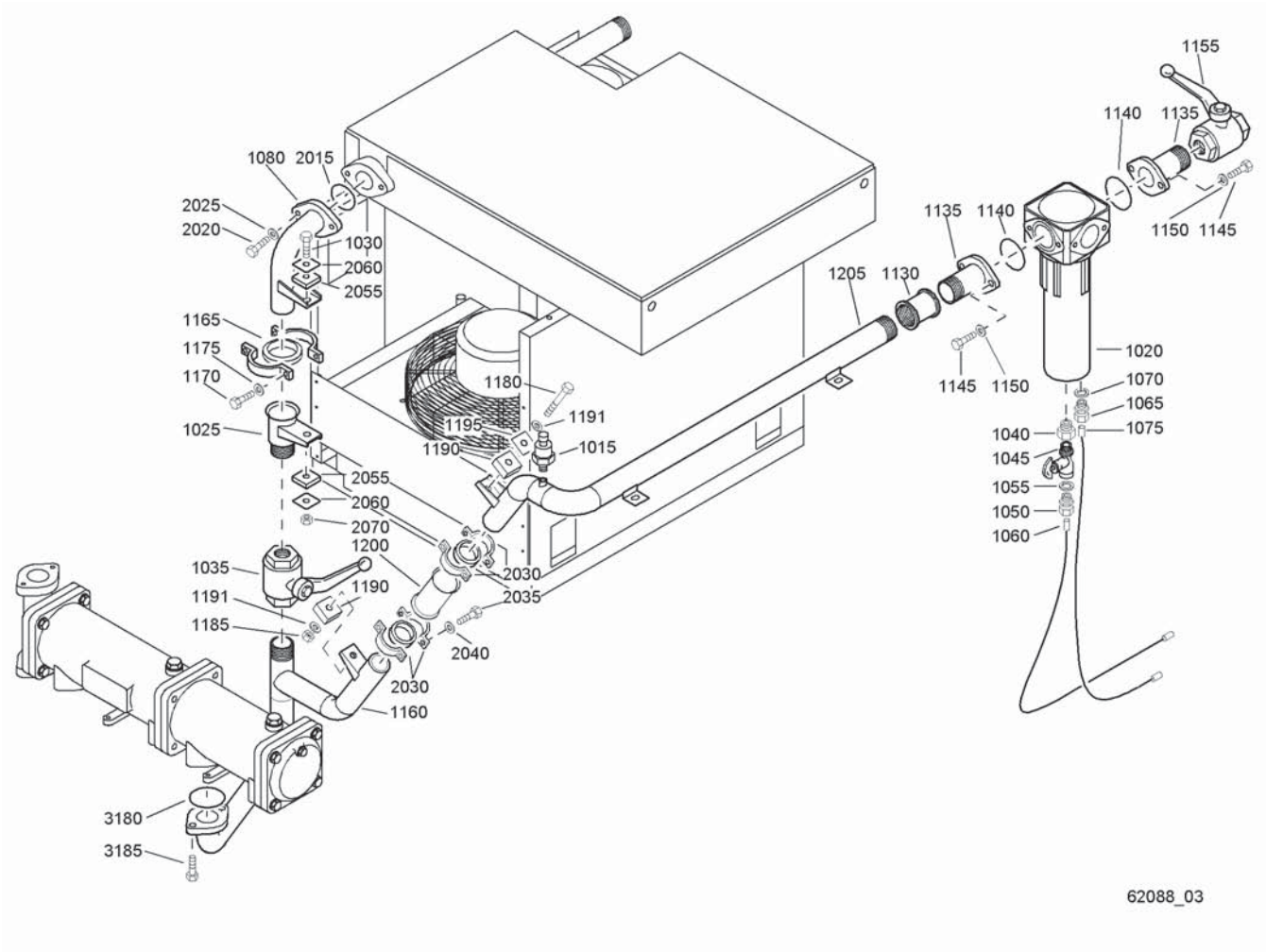
62087_03

By-pass - WorkPlace FF - GA37 VSD, GA45 VSD, GA50 VSD, GA55 VSD

17

Ref.	Part number	Qty	Name	Remarks	Ref.	Part number	Qty	Name	Remarks
1015	1089 0575 51	1	Press.transducer		1165	1613 8377 81	1	Joint set	
1020	1613 9356 80	1	Wsd80			1613 8377 00 •	1	Joint	
	0663 2111 80 •	1	O-ring		1170	0147 1960 44	2	Hexagon bolt	
	4090 0309 00 •	1	O-ring		1175	0301 2335 00	2	Washer	
	0663 2107 81 •	1	O ring		1180	0147 1962 69	1	Hexagon bolt	
	0663 2111 27 •	1	O-ring 31.5x3		1185	0291 1111 00	1	Lock nut	
1025	1613 8568 00	1	Connection		1190	1613 8451 02	2	Antivibration pad	
1030	0147 1375 03	1	Hexagon bolt		1191	0301 2344 00	2	Washer	
1035	0852 0010 32	1	Ball valve		1195	1613 8452 00	1	Washer	
1040	0605 8300 35	1	Bushing		1200	1613 8375 00	1	Pipe	
1045	1619 7336 00	1	Cock		1205	1613 8688 00	1	Pipe	
1050	0581 0000 35	1	Coupling		2015	0663 7136 00	1	O-ring	
1055	0653 1062 00	1	Flat gasket		2020	0147 1364 03	2	Hexagon bolt	
1060	0070 6002 05	AR	Plastic tube		2025	0301 2344 00	2	Washer	
1065	0581 0000 33	1	Coupling		2030	1613 8377 81	2	Joint set	
1070	0653 1062 00	1	Flat gasket			1613 8377 00 •	1	Joint	
1075	0070 6002 04	AR	Plastic tube		2035	0147 1960 44	4	Hexagon bolt	
1080	1613 8563 00	1	Pipe		2040	0301 2335 00	4	Washer	
1130	0607 2170 03	1	Socket		2050	0147 1962 69	1	Hexagon bolt	
1135	1613 8569 00	2	Pipe		2055	1613 8451 02	1	Antivibration pad	
1140	0663 7136 00	2	O-ring		2060	1613 8452 00	1	Washer	
1145	0147 1364 03	4	Hexagon bolt		2065	0301 2344 00	1	Washer	
1150	0301 2344 00	4	Washer		2070	0291 1111 00	1	Lock nut	
1155	0852 0010 19	1	Ball valve		3180	0663 7136 00	1	O-ring	
1160	1613 9940 00	1	Pipe		3185	0211 1363 03	2	Cap screw	

18



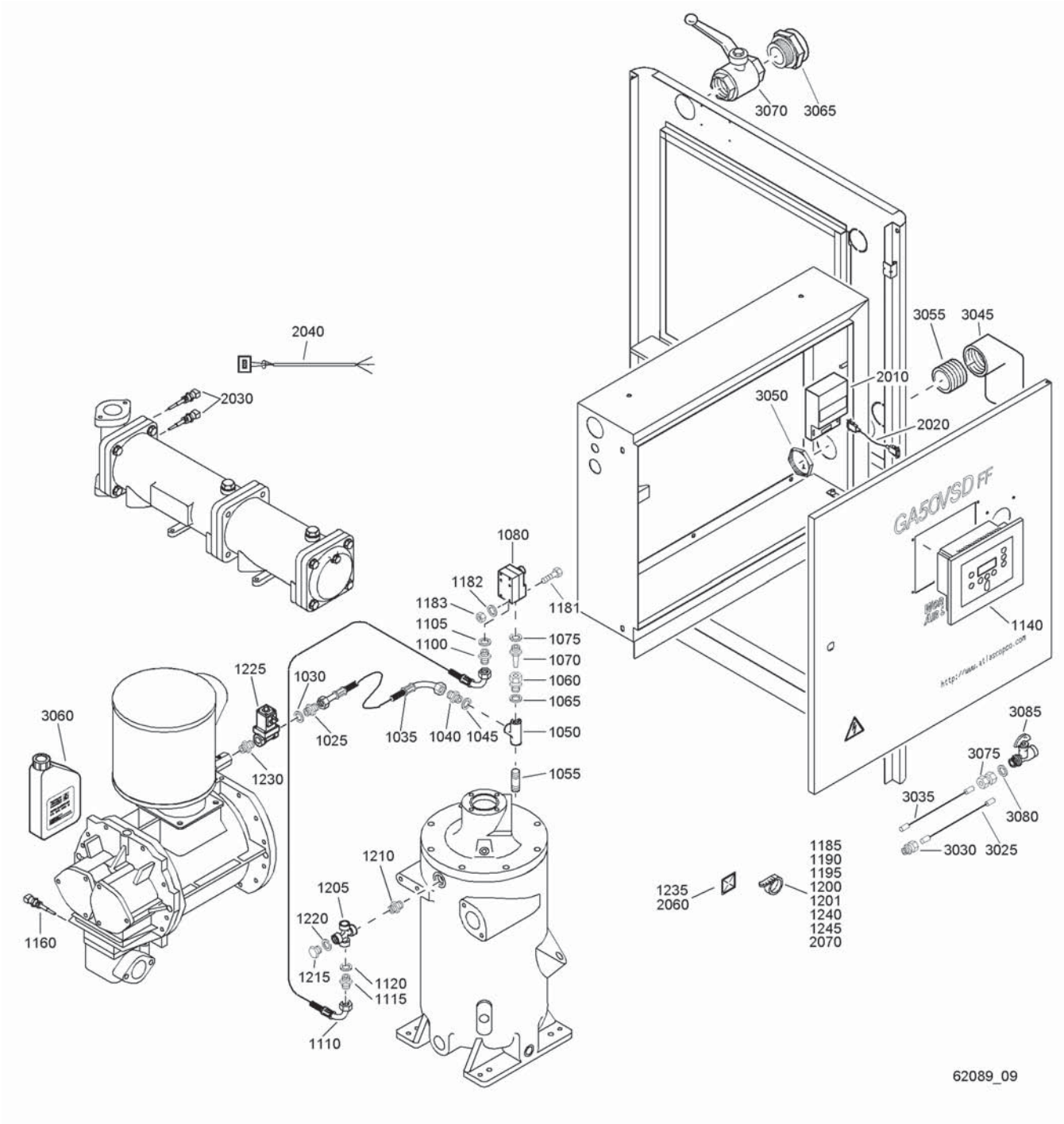
62088_03

By-pass - WorkPlace FF - GA50 W VSD, GA55 W VSD

18

Ref.	Part number	Qty	Name	Remarks	Ref.	Part number	Qty	Name	Remarks
1015	1089 0575 51	1	Press.transducer		1165	1613 8377 81	1	Joint set	
1020	1613 9356 80	1	Wsd80			1613 8377 00 •	1	Joint	
	0663 2111 80 •	1	O-ring		1170	0147 1960 44	2	Hexagon bolt	
	4090 0309 00 •	1	O-ring		1175	0301 2335 00	2	Washer	
	0663 2107 81 •	1	O ring		1180	0147 1962 69	1	Hexagon bolt	
	0663 2111 27 •	1	O-ring 31.5x3		1185	0291 1111 00	1	Lock nut	
1025	1613 8568 00	1	Connection		1190	1613 8451 02	2	Antivibration pad	
1030	0147 1375 03	1	Hexagon bolt		1191	0301 2344 00	2	Washer	
1035	0852 0010 32	1	Ball valve		1195	1613 8452 00	1	Washer	
1040	0605 8300 35	1	Bushing		1200	1613 8375 00	1	Pipe	
1045	1619 7336 00	1	Cock		1205	1613 8688 00	1	Pipe	
1050	0581 0000 35	1	Coupling		2015	0663 7136 00	1	O-ring	
1055	0653 1062 00	1	Flat gasket		2020	0147 1364 03	2	Hexagon bolt	
1060	0070 6002 05	AR	Plastic tube		2025	0301 2344 00	2	Washer	
1065	0581 0000 33	1	Coupling		2030	1613 8377 81	2	Joint set	
1070	0653 1062 00	1	Flat gasket			1613 8377 00 •	1	Joint	
1075	0070 6002 04	AR	Plastic tube		2035	0147 1960 44	4	Hexagon bolt	
1080	1613 8563 00	1	Pipe		2040	0301 2335 00	4	Washer	
1130	0607 2170 03	1	Socket		2050	0147 1962 69	1	Hexagon bolt	
1135	1613 8569 00	2	Pipe		2055	1613 8451 02	1	Antivibration pad	
1140	0663 7136 00	2	O-ring		2060	1613 8452 00	1	Washer	
1145	0147 1364 03	4	Hexagon bolt		2065	0301 2344 00	1	Washer	
1150	0301 2344 00	4	Washer		2070	0291 1111 00	1	Lock nut	
1155	0852 0010 19	1	Ball valve		3180	0663 7136 00	1	O-ring	
1160	1622 0563 00	1	Pipe		3185	0211 1363 03	2	Cap screw	

19

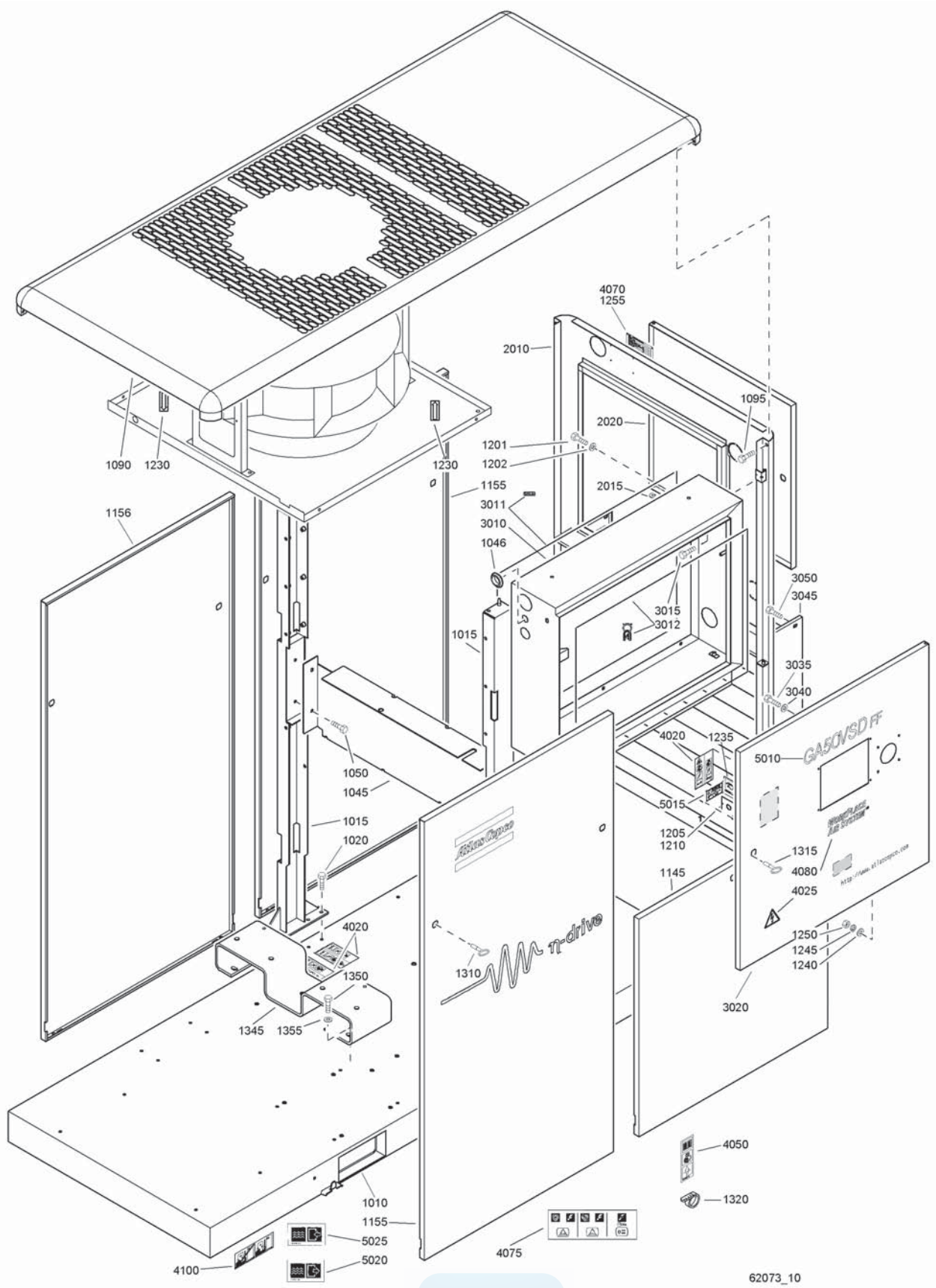


62089_09

Regulating system

Ref.	Part number	Qty	Name	Remarks	Ref.	Part number	Qty	Name	Remarks
1025	1079 5840 03	1	Nipple		1215	0686 4206 00	1	Hexagon plug	
1030	0661 1000 40	1	Seal washer		1220	0661 1000 43	1	Seal washer	
1035	0574 9911 15	1	Hose assembly		1225	1089 0580 01	1	Solenoid valve	
1040	1079 5840 03	1	Nipple		1230	0603 4103 03	1	Hexagon nipple	
1045	0661 1000 40	1	Seal washer		1235	1088 1305 02	2	Push mount	
1050	0564 0000 37	1	Tee		1240	1088 1301 02	2	Cable strip	
1055	0551 0001 75	1	Threaded pipe		1245	1088 1301 04	2	Cable strip	
1060	0581 0031 01	1	Pipe coupling		2010	1900 0710 41	1	AIE1 elektronik	
1065	0661 1000 40	1	Seal washer		2020	1622 0661 04	1	Cable temp. sensor	
1070	1615 3624 00	1	Nozzle		2030	1089 0574 40	2	Temp.sensor	
1075	0661 1000 42	1	Seal washer		2040	1622 0663 03	2	Cable temp.sensor	
1080	1089 0575 20	1	Dp transducer		2060	1088 1305 01	3	Push mount	
1100	1079 5840 01	1	Nipple		2070	1088 1301 01	3	Cable strip	
1105	0661 1000 42	1	Seal washer		3025	0070 6002 04	AR	Plastic tube	
1110	0574 9918 04	1	Hose assembly		3030	0581 0000 33	1	Coupling	
1115	0571 0035 05	1	Hexagon nipple		3035	0070 6002 05	AR	Plastic tube	
1120	0661 1000 38	1	Seal washer		3045	0697 9750 18	1	Elbow	
1140	1900 0710 12	1	Regulator elektronikon		3050	0697 9809 19	1	Lock nut	
1160	1089 0574 04	1	Temp.sensor		3055	1613 9799 00	1	Nipple threaded	
1181	0160 6048 00	1	Screw		3060		1	Oil can	
1182	0301 2315 00	1	Washer			1613 6532 01		Roto injectfluid	
1183	0266 2106 00	1	Nut			1613 9546 00		HD-Rotofluid Plus	
1185	1088 1301 02	6	Cable strip		3065		1	Bushing	
1190	1088 1301 05	2	Cable strip			0605 8350 26		NPT	
1195	1088 1301 02	3	Cable strip		3070	0852 0010 19	1	Ball valve	
1200	1088 1301 02	2	Cable strip		3075	0581 0000 35	1	Coupling	
1201	1088 1301 02	2	Cable strip		3080	0661 1000 38	1	Seal washer	
1205	0567 0005 04	1	Cross		3085	1619 7336 00	1	Cock	
1210	0603 4105 03	1	Hexagon nipple						

20



62073_10

62073_10

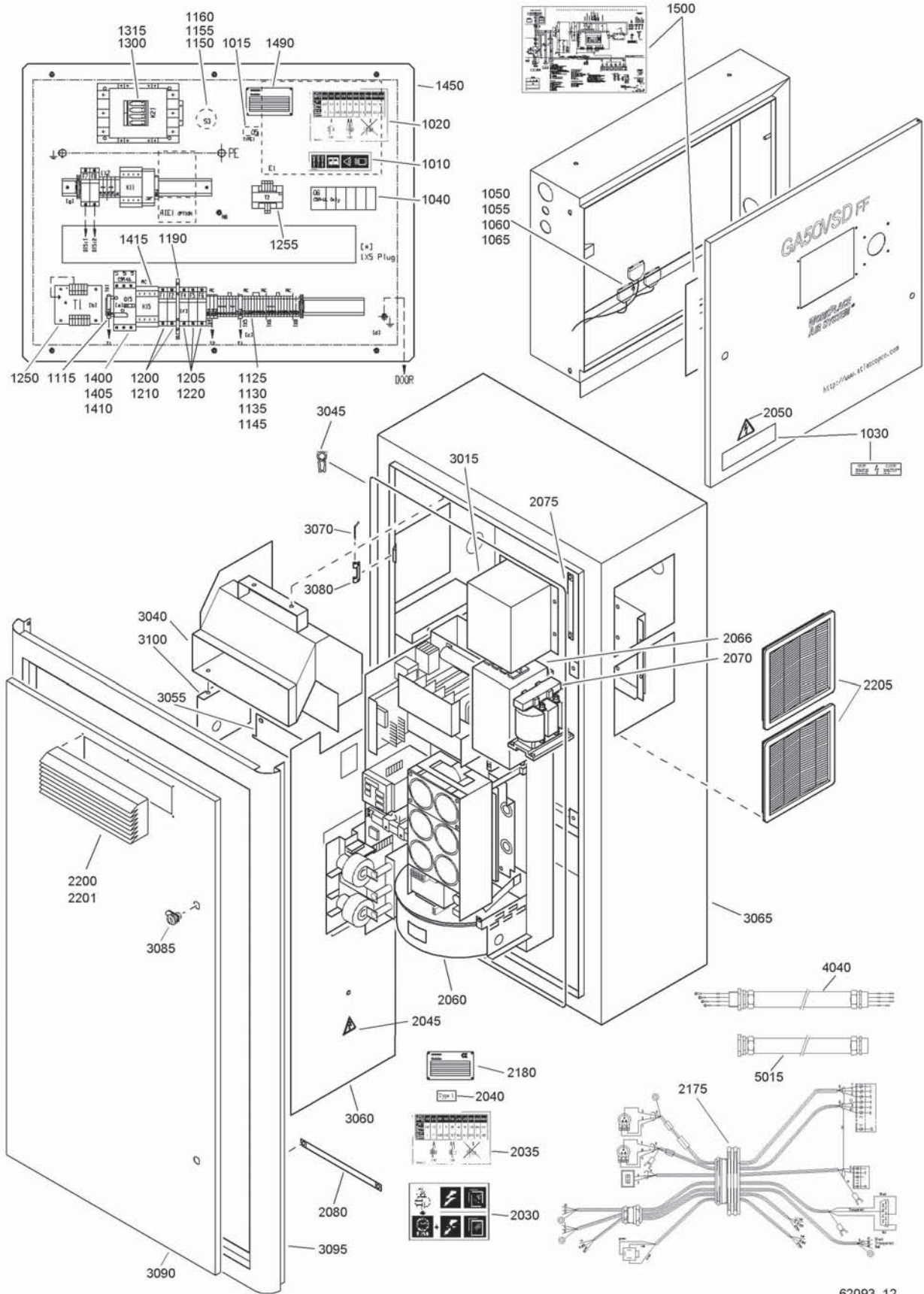


Bodywork

Ref.	Part number	Qty	Name	Remarks	Ref.	Part number	Qty	Name	Remarks
1010	1613 9880 00	1	Frame		3020	1613 9950 80	1	Door assembly 3)	
1015	1613 9884 00	2	Beam			1613 9998 80		GA37VSD 200V/50-60Hz	
1020	0147 1962 72	8	Hexagon bolt					Others	
1040	0147 1962 72	2	Hexagon bolt			1619 7705 00	• 1	Lock	
1045	1613 9883 00	1	Support			1079 9920 83	• 1	Label website	
1046	1088 0801 52	1	Grommet			1613 9525 00	• 1	Hinge	
1050	0147 1962 72	4	Hexagon bolt			0129 3270 29	• 2	Blind rivet	
1085	0147 1962 72	4	Hexagon bolt		3035	0147 1205 03	4	Hexagon bolt	
1090	1613 9877 80	1	Roof assembly	1)	3040	0301 2318 00	4	Washer	
	0129 3270 30	• 8	Blind rivet		3045	1622 0533 80	1	Inlet baffle ass'y	4)
	1613 8344 00	• 1	Corner		3050	0147 1962 72	6	Hexagon bolt	
1095	0226 0300 46	4	Tapping screw		4020	1079 9901 09	5	Label	
1100	0211 1325 03	2	Cap screw		4025	1088 1001 02	1	Warning mark	
1105	0147 1962 72	2	Hexagon bolt		4050	1079 9901 29	1	Label	
1145	1613 9996 80	1	Panel ass'y	1)	4070	1622 0395 04	1	Data plate	
	1613 8485 00	• 1	Lock		4075	1079 9904 99	1	Warning label	
	1616 2987 00	• 2	Plug		4080	1613 9846 00	1	Decal workplace	
1155	1613 9994 83	2	Panel ass'y	1)	4100	1079 9922 39	2	Warning label	
	1613 8485 00	• 2	Lock		5010		1	Decal	
	0690 1125 01	• 1	House mark			1613 9027 63		GA37VSD	
	1616 2987 00	• 2	Plug			1613 9027 64		GA37VSD FF	
	1079 9920 61	• 1	Label n-drive	6)		1613 9027 69		GA45VSD	
1156	1613 9994 80	1	Panel ass'y			1613 9027 70		GA45VSD FF	
	1613 8485 00	• 2	Lock			1613 9027 39		GA50VSD	
	1616 2987 00	• 2	Plug			1613 9027 40		GA50VSD FF	
1200	1619 2766 00	3	Bolt			1613 9027 67		GA55VSD	
1201	1619 2766 00	6	Bolt			1613 9027 68		GA55VSD FF	
1202	0333 3227 00	6	Lock washer		5015		1	Listing mark	
1205	1613 9613 01	1	Plate			1613 5330 00		CSA/UL	
1210	0226 3343 59	4	Tapping screw		5020		1	Inform.label	
1230	1503 0786 00	2	Rotation arrow			1079 9913 69		Cooling water out	
1235	1079 9915 99	1	Label		5025		1	Inform.label	
1240	0301 2335 00	1	Washer			1079 9913 79		Cooling water in	
1245	0333 3227 00	1	Lock washer		1-4)			Lined with / Bekleed met / Beklädd med / Ausgekleidet mit / Garnir de / Rivestido de / Allineato con / Foret med / Revestido com / Kledd med / Vuorattu :	
1250	0266 2110 00	1	Nut					1) Foam : 0395 6001 67 (AR) 30 x 2040 x 1650 self-adhesive	
1255	0129 3103 00	4	Blind rivet					2) Foam : 0395 6001 64 (AR) 20 x 2040 x 1650 self-adhesive	
1310	1089 9068 01	2	Key					3) Foam : 0395 6001 66 (AR) 25 x 2040 x 1650 self-adhesive	
1315	1089 9154 02	1	Key					4) Foam : 0395 6001 69 (AR) 50 x 2040 x 1650 self-adhesive	
1320	1088 1301 02	1	Cable strip		5)			5) Up to serial No. : Tot serienummer: T.o.m. tillverkningsnummer: Bis Seriennummer: Jusqu'au numéro de série: Hasta el número de serie: Fino al numeri di serie: Gælder til følgende serienumre: Até o número de série: Til følgende serienummer: Seuraavaan valmistusnumeroon asti, No.: AII-356 149	
1345	1613 9881 00	1	Support					6)-7) From following serial No. onwards: Geldig vanaf volgend serienummer: Fr.o.m. tillverkningsnummer: Gültig ab Seriennummer: Valable à partir du numéro de série suivant: A partir del siguiente número de serie: Dai seguenti numeri di serie in avanti: Gælder fra følgende serienumre: A partir do número de série: Fra og med følgende serienummer: Alkaen valmistusnumerosta 6) AII-356 150 7) API-570 000	
1350	0147 1362 03	5	Hexagon bolt						
1355	0301 2344 00	5	Washer						
		1	Panel assembly						
	1613 9855 80			5)					
	1613 9855 81			6)					
	1613 9936 80		HAV	6)					
	1613 9855 83		HAV	7)					
2010	1613 9855 00	• 1	Panel						
	1613 9855 10			5)					
	1613 9936 00		HAV	6)					
	1613 9855 13		HAV	7)					
	1613 9882 00	•• 4	Hinge	5)					
2015	1613 8560 00	• 1	Washer						
		• 1	Silencing foam	6)					
	1613 8878 00		HAV						
2020	1613 8550 81	• 1	Door assembly	2)					
	1613 8486 00	•• 1	Lock						
	1613 8484 01	•• 1	Hinge						
	0129 3270 29	•• 2	Blind rivet						
3010	1622 0519 80	1	Cubicle ass'y						
				6)					
			GA37VSD 200V/50-60Hz						
	1622 0519 81			7)					
			GA37VSD 200V/50-60Hz						
	1613 9943 80		Others	6)					
	1613 9943 82		Others	7)					
3011	1619 3843 00	• AR	Seal						
3012	1202 6584 00	• AR	Seal						
3015	0147 1962 72	3	Hexagon bolt						



21

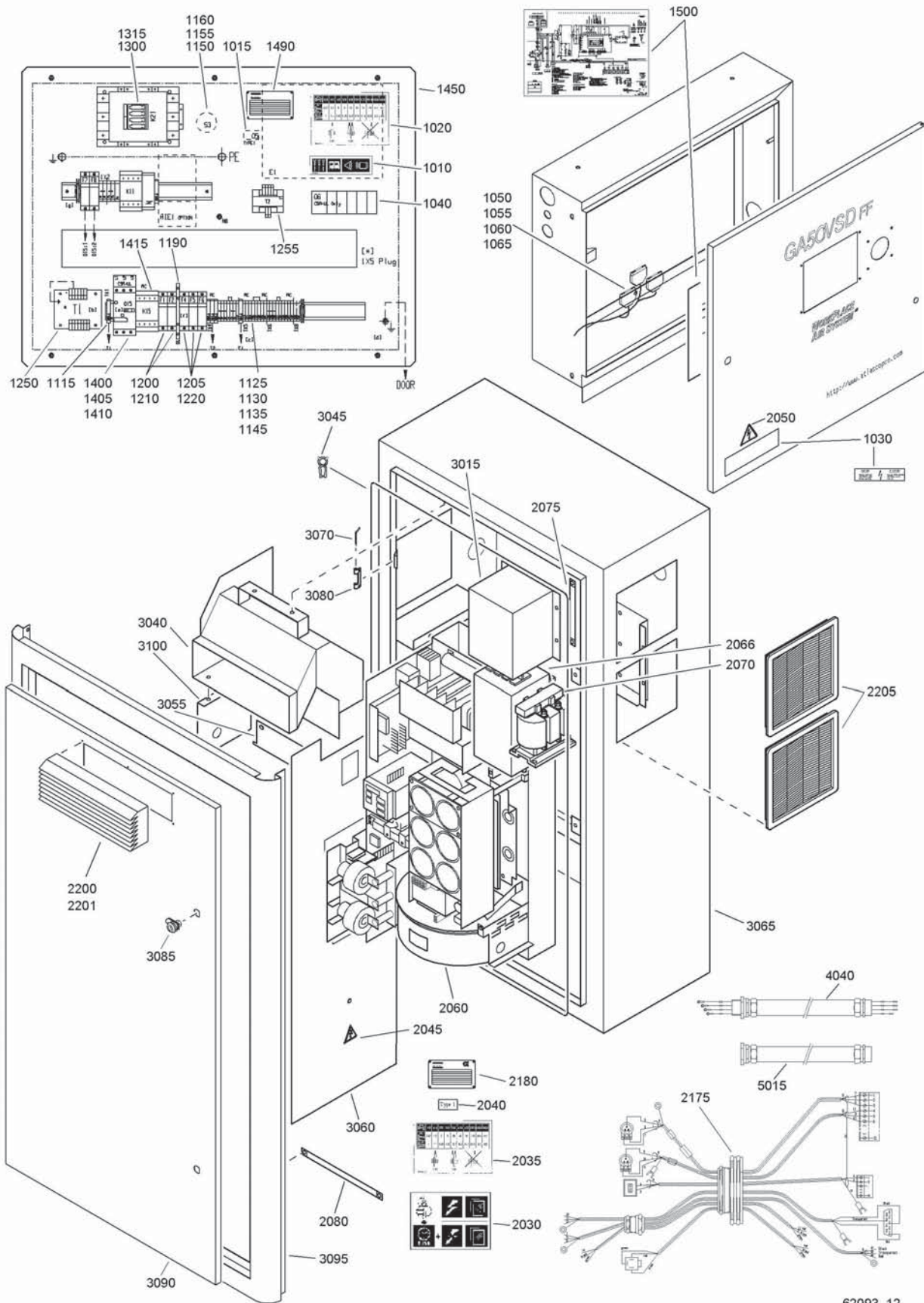


Cubicle - GA37, GA45, GA50 (W), GA55 (W) VSD - IEC - CSA/UL - 1)

21

Ref.	Part number	Qty	Name	Remarks	Ref.	Part number	Qty	Name	Remarks
		1	Cubicle		1220		3	Fuse	
	1900 2031 05		GA37 380-460V/50-60Hz IEC, GA45 380-460V/50-60Hz IEC			1089 9037 02		GA37 380-460V/50-60Hz IEC, GA45 380-460V/50-60Hz IEC, GA50 (W) 380-460V/50-60Hz IEC, GA55 (W) 380-460V/50-60Hz IEC	
	1900 2031 15		GA37 380-460V/50-60Hz CSA/UL, GA45 380-460V/50-60Hz CSA/UL					Others	
	1900 2031 04		GA50 (W) 380-460V/50-60Hz IEC, GA55 (W) 380-460V/50-60Hz IEC		1089 9168 02			Transformer	
	1900 2031 16		GA50 (W) 380-460V/50-60Hz CSA/UL, GA55 (W) 380-460V/50-60Hz CSA/UL		1250 1089 9436 03		1	Transformer	
	1900 2031 17		GA50 (W) 500-575V/50-60Hz CSA/UL		1255	1089 9136 93		Transformer	
1010	1079 9901 68	• 1	Warning label					GA37 380-460V/50-60Hz IEC, GA45 380-460V/50-60Hz IEC, GA50 (W) 380-460V/50-60Hz IEC, GA55 (W) 380-460V/50-60Hz IEC	
1015	1079 9911 01	• 1	Label					Others	
1020	1079 9906 09	• 1	Label			1089 9136 27		Others	
1030	1613 3431 00	• 1	Label		1300	1089 9415 62	• 1	Contact	
1040	1079 9923 15	• 1	Label fuse values		1315	1089 9362 02	• 6	Terminal cover	
1050	1088 0031 02	• 1	Connector		1400	1089 9416 01	• 1	Aux.contact block	
1055	1088 0031 13	• 1	Connector		1405		• 1	Circuit breaker	
1060	1088 0031 29	• 1	Connector			1089 9416 64		GA37 380-460V/50-60Hz IEC, GA45 380-460V/50-60Hz IEC, GA50 (W) 380-460V/50-60Hz CSA/UL, GA55 (W) 380-460V/50-60Hz CSA/UL	
1065	1088 0031 49	• 1	Connector					GA50 (W) 500-575V/50-60Hz CSA/UL	
1115	1089 0506 09	• 1	Terminal			1089 9416 66		GA50 (W) 380-460V/50-60Hz IEC, GA55 (W) 380-460V/50-60Hz IEC, GA50 (W) 380-460V/50-60Hz CSA/UL, GA55 (W) 380-460V/50-60Hz CSA/UL	
1125	1089 0506 27	• 5	Terminal					Connection block	
1130	1089 0506 62	• 3	Terminal			1089 9416 68		GA37 380-460V/50-60Hz CSA/UL, GA45 380-460V/50-60Hz CSA/UL	
1135	1089 0506 63	• 7	Terminal					GA50 (W) 380-460V/50-60Hz IEC, GA55 (W) 380-460V/50-60Hz IEC, GA50 (W) 380-460V/50-60Hz CSA/UL, GA55 (W) 380-460V/50-60Hz CSA/UL	
1145	1089 0506 23	• 3	Barrier					GA50 (W) 500-575V/50-60Hz CSA/UL	
1150	1089 0362 51	• 1	Push button					GA50 (W) 380-460V/50-60Hz IEC, GA55 (W) 380-460V/50-60Hz IEC	
1155	1089 0362 50	• 1	Contact block					GA50 (W) 500-575V/50-60Hz CSA/UL	
1160	1089 0362 58	• 1	Contact block					GA50 (W) 380-460V/50-60Hz IEC, GA55 (W) 380-460V/50-60Hz IEC	
1190	1089 0609 05	• 1	Terminal switch					GA50 (W) 380-460V/50-60Hz IEC, GA55 (W) 380-460V/50-60Hz IEC	
1200		•	Fuse holder					GA50 (W) 380-460V/50-60Hz CSA/UL, GA55 (W) 380-460V/50-60Hz CSA/UL	
	1089 0612 01	2	GA37 380-460V/50-60Hz IEC, GA45 380-460V/50-60Hz IEC, GA50 (W) 380-460V/50-60Hz IEC, GA55 (W) 380-460V/50-60Hz IEC		1410	1089 9416 75	• 1	Connection block	
	1089 0612 01	5	Others					GA37 380-460V/50-60Hz CSA/UL, GA45 380-460V/50-60Hz CSA/UL, GA50 (W) 380-460V/50-60Hz CSA/UL, GA55 (W) 380-460V/50-60Hz CSA/UL, GA50 (W) 500-575V/50-60Hz CSA/UL	
1205		• 3	Fuse terminal					GA50 (W) 380-460V/50-60Hz IEC, GA55 (W) 380-460V/50-60Hz IEC	
	1089 0506 16		GA37 380-460V/50-60Hz IEC, GA45 380-460V/50-60Hz IEC, GA50 (W) 380-460V/50-60Hz IEC, GA55 (W) 380-460V/50-60Hz IEC		1415	1089 9415 14	• 1	Contact	
		• 2	Fuse		1450	1613 8466 00	• 1	Plate	
1210			GA37 380-460V/50-60Hz IEC, GA45 380-460V/50-60Hz IEC, GA50 (W) 380-460V/50-60Hz IEC, GA55 (W) 380-460V/50-60Hz IEC		1490		• 1	Data plate	
	1089 0612 23		GA37 380-460V/50-60Hz IEC, GA45 380-460V/50-60Hz IEC, GA50 (W) 380-460V/50-60Hz IEC, GA55 (W) 380-460V/50-60Hz IEC			1613 6639 00		GA37 380-460V/50-60Hz IEC, GA45 380-460V/50-60Hz IEC, GA50 (W) 380-460V/50-60Hz IEC, GA55 (W) 380-460V/50-60Hz IEC	
	1089 9168 24		Others					GA50 (W) 500-575V/50-60Hz IEC	
						1614 8949 00		Others	

21

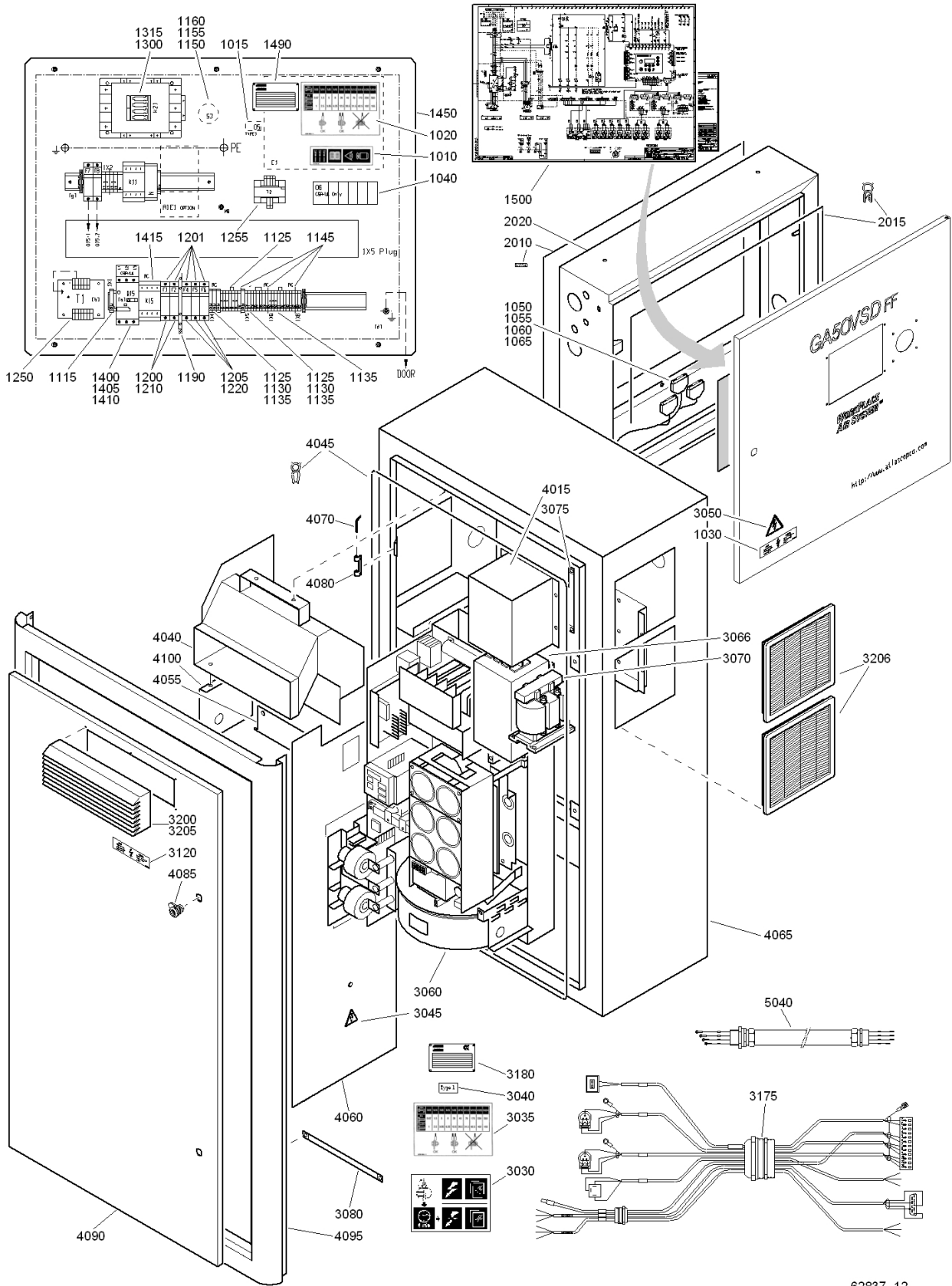


Cubicle - GA37, GA45, GA50 (W), GA55 (W) VSD - IEC - CSA/UL - 1)

Ref.	Part number	Qty	Name	Remarks	Ref.	Part number	Qty	Name	Remarks
1500	9820 3135 06 •	1	Service diagram		4040	1613 9983 10	1	Cable assembly Cubicle-convertor	
	1900 2031 83	1	Convertor panel		5015	1613 8499 02	1	Conduit assembly Motor-convertor	
			GA37 380-460V/50-60Hz IEC,						
			GA45 380-460V/50-60Hz IEC,						
			GA37 380-460V/50-60Hz CSA/UL,						
			GA45 380-460V/50-60Hz CSA/UL,						
			GA50 (W) 380-460V/50-60Hz IEC,						
			GA55 (W) 380-460V/50-60Hz IEC,						
			GA50 (W) 380-460V/50-60Hz CSA/UL,						
			GA55 (W) 380-460V/50-60Hz CSA/UL						
	1900 2031 73		GA50 (W) 575V/60Hz CSA/UL						
	1900 2031 75		GA50 (W) 500V/50Hz CSA/UL						
2030	1079 9901 61 •	1	Decal						
2035	1079 9906 09 •	1	Label						
2040	1079 9911 01 •	1	Label						
2045	1088 1001 02 •	1	Warning mark						
2050	1088 1001 04 •	1	Warning mark						
2060		•	1	Converter					
	1089 9338 21			GA50 (W) 575V/60Hz CSA/UL,					
				GA50 (W) 500V/50Hz CSA/UL					
	1089 9338 20			Others					
2066		•	1	Rfi-filter					
	1089 9339 20			GA50 (W) 575V/60Hz CSA/UL,					
				GA50 (W) 500V/50Hz CSA/UL					
	1089 9339 10			Others					
2070		•	1	Inductor					
	1089 9342 11			GA50 (W) 575V/60Hz CSA/UL,					
				GA50 (W) 500V/50Hz CSA/UL					
	1089 9342 10			Others					
2075	1089 9345 01 •	1	Hf-screen	L = 140mm					
2080	1089 9345 02 •	2	Hf-screen	L = 300mm					
2175	1613 9979 04 •	1	Wire harness						
2180	1614 8949 00 •	1	Data plate						
2200	1088 0501 04 •	1	Air inlet						
2201	1088 0501 12 •	1	Metal wire net						
2205	1089 9556 03 •	4	Air inlet with filter						
	1622 0540 80 •	1	Cubicle	2)					
3015	1613 8467 00 ••	1	Cover						
3040	1613 9864 00 ••	1	Duct						
3045	1202 6584 00 ••	AR	Seal						
3055	1613 9383 00 ••	1	Screen						
3060	1613 9857 00 ••	1	Plate						
3065	1622 0540 00 ••	1	Cubicle						
3070	1613 9532 00 ••	3	Pin						
3080	1613 9525 00 ••	3	Hinge						
3085	1619 7705 00 ••	2	Lock						
3090	1613 9862 00 ••	1	Door						
3095	1613 9863 00 ••	1	Panel						
3100	1613 9305 00 ••	1	Plate						

- 1) Up to serial No. :
 Tot serienummer:
 T.o.m. tillverkningsnummer:
 Bis Seriennummer:
 Jusqu'au numéro de série:
 Hasta el número de serie:
 Fino al numeri di serie:
 Gælder til følgende serienumre:
 Até o número de série:
 Til følgende serienummer:
 Seuraavaan valmistusnumeroon asti, No.:
 API-569 999
- 2) Lined with / Bekleed met / Beklädd med / Ausgekleidet mit / Garnir de / Rivestido de / Allineato con / Foret med / Revestido com / Kledd med / Vuorattu :
 Foam: 0395 6001 66 (AR) 25 x 2040 x 1650

22



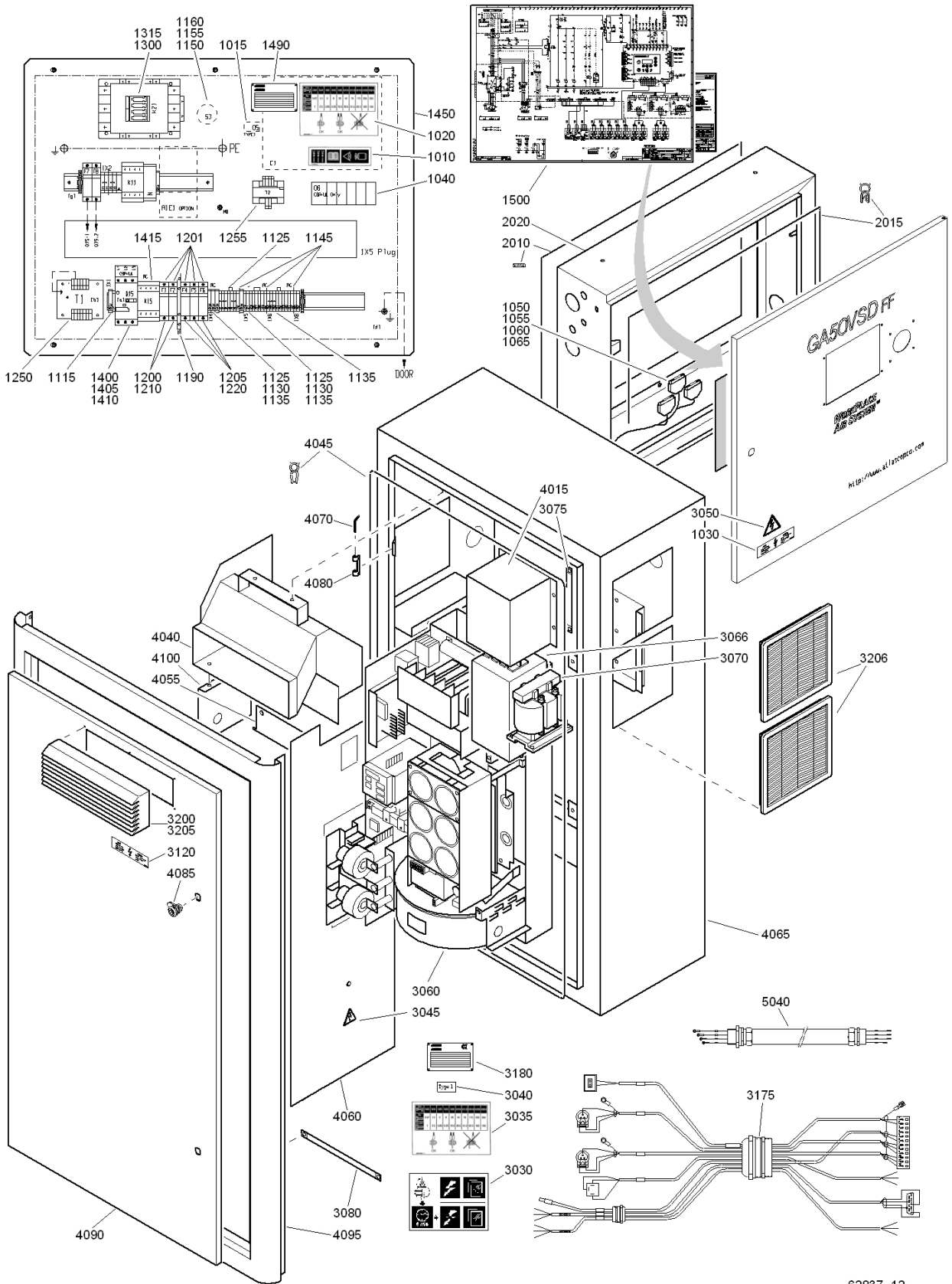
62837_12



Cubicle - GA37, GA45, GA50 (W), GA55 (W) VSD - IEC - CSA/UL - 2)

Ref.	Part number	Qty	Name	Remarks	Ref.	Part number	Qty	Name	Remarks
	1900 2031 07	1	Cubicle			1089 0612 01		GA50 (W) 500-575V/50-60Hz CSA/UL	
			GA37 380-460V/50-60Hz IEC		1205	• 3		Fuse terminal	
	1900 2031 25		GA37 380-460V/50-60Hz CSA/UL		1089 0506 16			GA37 380-460V/50-60Hz IEC	
	1900 2031 25		GA45 380-460V/50-60Hz CSA/UL		1089 0506 16			GA50 (W) 380-460V/50-60Hz IEC	
	1900 2031 06		GA50 (W) 380-460V/50-60Hz IEC		1210	• 2		Fuse	
	1900 2031 26		GA55 (W) 380-460V/50-60Hz CSA/UL		1089 0612 23			GA37 380-460V/50-60Hz IEC	
	1900 2031 27		GA50 (W) 500-575V/50-60Hz CSA/UL		1089 9168 24			GA37 380-460V/50-60Hz CSA/UL	
1010	1079 9901 68	• 1	Warning label		1089 9168 24			GA45 380-460V/50-60Hz CSA/UL	
1015	• 1	Label			1089 0612 23			GA50 (W) 380-460V/50-60Hz IEC	
	1079 9911 01		GA37 380-460V/50-60Hz CSA/UL		1089 9168 24			GA55 (W) 380-460V/50-60Hz CSA/UL	
	1079 9911 01		GA45 380-460V/50-60Hz CSA/UL		1089 9168 24			GA50 (W) 500-575V/50-60Hz CSA/UL	
	1079 9911 01		GA55 (W) 380-460V/50-60Hz CSA/UL		1220	• 3		Fuse link	
	1079 9911 01		GA50 (W) 500-575V/50-60Hz CSA/UL		1089 9037 02			GA37 380-460V/50-60Hz IEC	
1020	1079 9906 09	• 1	Label		1089 9168 02			GA37 380-460V/50-60Hz CSA/UL	
1030	• 1	Label			1089 9168 02			GA45 380-460V/50-60Hz CSA/UL	
	1613 3431 00		GA37 380-460V/50-60Hz CSA/UL		1089 9037 02			GA50 (W) 380-460V/50-60Hz IEC	
	1613 3431 00		GA45 380-460V/50-60Hz CSA/UL		1089 9168 02			GA55 (W) 380-460V/50-60Hz CSA/UL	
	1613 3431 00		GA55 (W) 380-460V/50-60Hz CSA/UL		1089 9168 02			GA50 (W) 500-575V/50-60Hz CSA/UL	
	1613 3431 00		GA50 (W) 500-575V/50-60Hz CSA/UL		1250	• 1		Transformer	
1040	• 1	Label			1255	• 1		Transformer	
	1079 9923 15		GA37 380-460V/50-60Hz CSA/UL		1089 9136 93			GA37 380-460V/50-60Hz IEC	
	1079 9923 15		GA45 380-460V/50-60Hz CSA/UL		1089 9136 27			GA37 380-460V/50-60Hz CSA/UL	
	1079 9923 15		GA55 (W) 380-460V/50-60Hz CSA/UL		1089 9136 27			GA45 380-460V/50-60Hz CSA/UL	
	1079 9923 15		GA50 (W) 500-575V/50-60Hz CSA/UL		1089 9136 93			GA50 (W) 380-460V/50-60Hz IEC	
1050	1088 0031 02	• 1	Connector		1089 9136 27			GA55 (W) 380-460V/50-60Hz CSA/UL	
1055	1088 0031 13	• 1	Connector		1089 9136 27			GA50 (W) 500-575V/50-60Hz CSA/UL	
1060	1088 0031 29	• 1	Connector		1300	• 1		Contact	
1065	1088 0031 49	• 1	Connector		1315	• 6		Terminal cover	
1115	1089 0506 09	• 1	Terminal		1400	• 1		Auxiliary contact block	
1125	1089 0506 27	• 5	Terminal		1405	• 1		Circuit breaker	
1130	1089 0506 62	• 3	Terminal		1089 9416 64			GA37 380-460V/50-60Hz IEC	
1135	1089 0506 63	• 7	Terminal		1089 9416 64			GA37 380-460V/50-60Hz CSA/UL	
1145	1089 0506 23	• 3	Barrier		1089 9416 64			GA45 380-460V/50-60Hz CSA/UL	
1150	1089 0362 51	• 1	Push button		1089 9416 68			GA50 (W) 380-460V/50-60Hz IEC	
1155	1089 0362 50	• 1	Contact block		1089 9416 68			GA55 (W) 380-460V/50-60Hz CSA/UL	
1160	1089 0362 58	• 1	Contact block		1089 9416 66			GA50 (W) 500-575V/50-60Hz CSA/UL	
1190	1089 0609 05	• 1	Terminal switch		1410	• 1		Connection block	
1200	• 2	Fuse holder			1089 9416 75			GA37 380-460V/50-60Hz CSA/UL	
	1089 0612 01		GA37 380-460V/50-60Hz IEC					GA50 (W) 380-460V/50-60Hz IEC	
	1089 0612 01		GA50 (W) 380-460V/50-60Hz IEC					GA55 (W) 380-460V/50-60Hz CSA/UL	
1201	• 5	Fuse holder						GA50 (W) 500-575V/50-60Hz CSA/UL	
	1089 0612 01		GA37 380-460V/50-60Hz CSA/UL					GA50 (W) 500-575V/50-60Hz CSA/UL	
	1089 0612 01		GA45 380-460V/50-60Hz CSA/UL					Connection block	
	1089 0612 01		GA55 (W) 380-460V/50-60Hz CSA/UL					GA37 380-460V/50-60Hz CSA/UL	

22

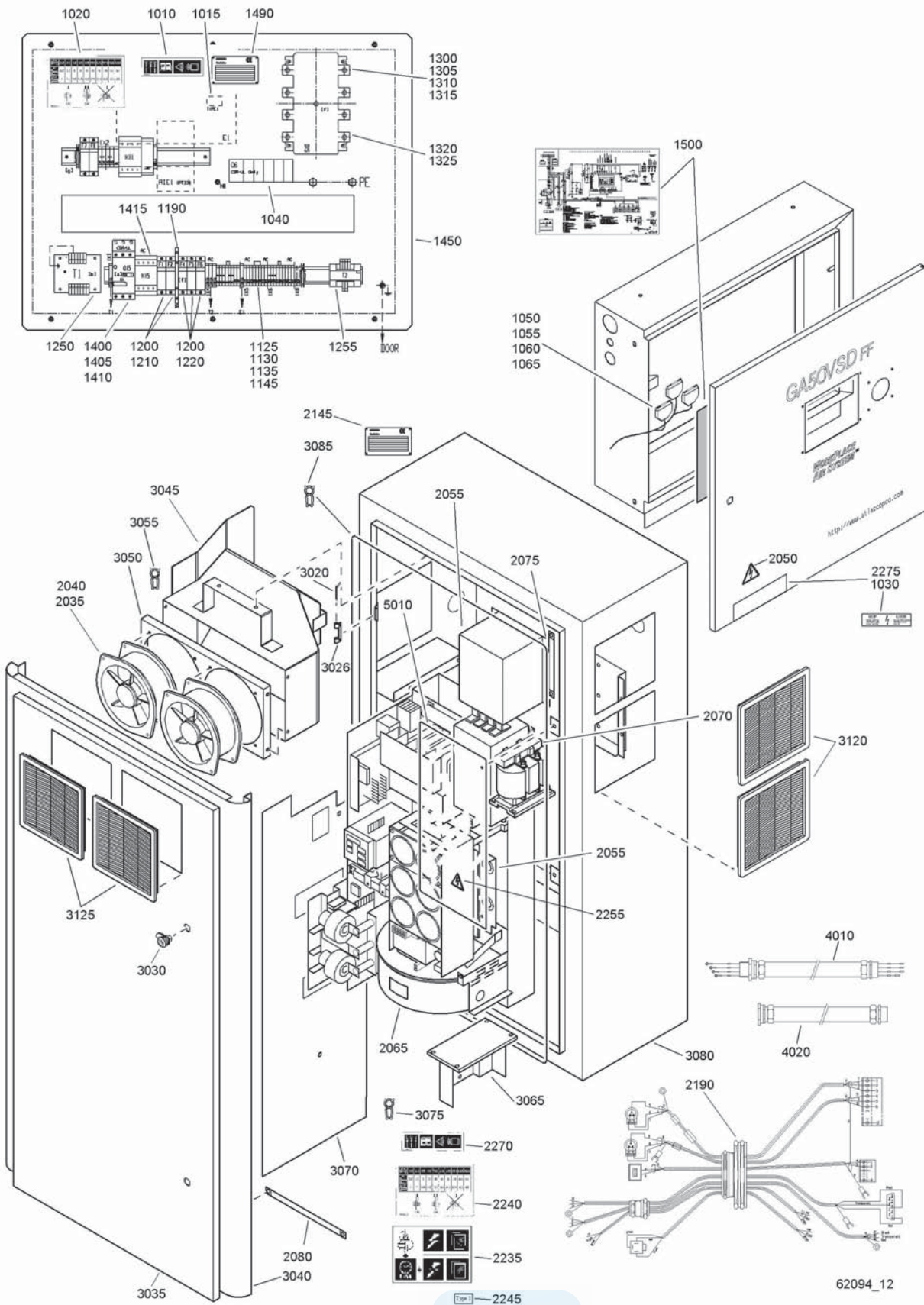


62837_12

Cubicle - GA37, GA45, GA50 (W), GA55 (W) VSD - IEC - CSA/UL - 2)

Ref.	Part number	Qty	Name	Remarks	Ref.	Part number	Qty	Name	Remarks
	1089 9416 75		GA45 380-460V/50-60Hz CSA/UL		1089 9339 10		GA45 380-460V/50-60Hz CSA/UL		
	1089 9416 75		GA55 (W) 380-460V/50- 60Hz CSA/UL		1089 9339 10		GA50 (W) 380-460V/50- 60Hz IEC		
	1089 9416 75		GA50 (W) 500-575V/50- 60Hz CSA/UL		1089 9339 10		GA55 (W) 380-460V/50- 60Hz CSA/UL		
1415	1089 9415 14	• 1	Contactor		1089 9339 20		GA50 (W) 575V/50-60Hz CSA/UL		
1450	1613 8466 00	• 1	Plate		1089 9339 20		GA50 (W) 500V/50-60Hz CSA/UL		
1490		• 1	Data plate		3070	• 1	Inductor		
	1613 6639 00		GA37 380-460V/50-60Hz IEC		1089 9342 10		GA37 380-460V/50-60Hz IEC		
	1614 8949 00		GA37 380-460V/50-60Hz CSA/UL		1089 9342 10		GA37 380-460V/50-60Hz CSA/UL		
	1614 8949 00		GA45 380-460V/50-60Hz CSA/UL		1089 9342 10		GA45 380-460V/50-60Hz CSA/UL		
	1613 6639 00		GA50 (W) 380-460V/50- 60Hz IEC		1089 9342 10		GA50 (W) 380-460V/50- 60Hz IEC		
	1614 8949 00		GA55 (W) 380-460V/50- 60Hz CSA/UL		1089 9342 10		GA55 (W) 380-460V/50- 60Hz CSA/UL		
	1614 8949 00		GA50 (W) 500-575V/50- 60Hz CSA/UL		1089 9342 11		GA50 (W) 575V/50-60Hz CSA/UL		
1500	9820 3135 06	• 1	Service diagram		1089 9342 11		GA50 (W) 500V/50-60Hz CSA/UL		
	1613 9943 82	• 1	Cubicle assembly						
2010	1619 3843 00	•• AR	Seal						
2015	1202 6584 00	•• AR	Seal						
2020	1613 9943 02	•• 1	Cubicle		3075	1089 9345 01	• 1	Hf-screen	
	1900 2031 83	1	Converter panel		3080	1089 9345 02	• 2	Hf-screen	
			GA37 380-460V/50-60Hz IEC		3120	1613 3431 00	• 1	Label	
	1900 2031 83		GA37 380-460V/50-60Hz CSA/UL		3175	1613 9979 24	• 1	Wire harness	
	1900 2031 83		GA45 380-460V/50-60Hz CSA/UL		3180	1614 8949 00	• 1	Data plate	
	1900 2031 83		GA50 (W) 380-460V/50- 60Hz IEC		3200	1088 0501 04	• 1	Air inlet	
	1900 2031 83		GA55 (W) 380-460V/50- 60Hz CSA/UL		3205	1088 0501 12	• 1	Metal wire net	
	1900 2031 73		GA50 (W) 575V/50-60Hz CSA/UL		3206	1089 9556 03	• 4	Air inlet with filter	
	1900 2031 75		GA50 (W) 500V/50-60Hz CSA/UL			1622 0540 80	• 1	Cubicle 1)	
					4015	1613 8467 00	•• 1	Cover	
					4040	1613 9864 00	•• 1	Duct	
					4045	1202 6584 00	•• AR	Seal	
					4055	1613 9383 00	•• 1	Screen	
					4060	1613 9857 00	•• 1	Plate	
					4065	1622 0540 00	•• 1	Cubicle	
					4070	1613 9532 00	•• 3	Pin	
					4080	1613 9525 00	•• 3	Hinge	
					4085	1619 7705 00	•• 2	Lock	
					4090	1613 9862 00	•• 1	Door	
					4095	1613 9863 00	•• 1	Panel	
					4100	1613 9305 00	•• 1	Plate	
					5040	1613 9983 10	1	Cable assembly Cubicle-converter	
3030	1079 9901 61	• 1	Decal						
3035	1079 9906 09	• 1	Label						
3040	1079 9911 01	• 1	Label						
3045	1088 1001 02	• 1	Warning mark						
3050	1088 1001 04	• 1	Warning mark						
3060		• 1	Converter						
	1089 9338 20		GA37 380-460V/50-60Hz IEC						
	1089 9338 20		GA37 380-460V/50-60Hz CSA/UL		1)			Lined with / Bekleed met / Beklädd med / Ausgekleidet mit / Garnir de/ Rivestido de / Allineato con / Foret med / Revestido com / Kledd med / Vuorattu : Foam : 0395 6001 66 (AR) 25 x 2040 x 1650 self-adhesive	
	1089 9338 20		GA45 380-460V/50-60Hz CSA/UL		2)			From following serial No. onwards: Geldig vanaf volgend serienummer: Fr.o.m. tillverkningsnummer: Gültig ab Seriennummer: Valable à partir du numéro de série suivant: A partir del siguiente número de serie: Dai seguenti numeri di serie in avanti: Gælder fra følgende serienumre: A partir do número de série: Frå og med følgende serienummer: Alkaen valmistusnumerosta API-570 000	
	1089 9338 20		GA50 (W) 380-460V/50- 60Hz IEC						
	1089 9338 20		GA55 (W) 380-460V/50- 60Hz CSA/UL						
	1089 9338 21		GA50 (W) 575V/50-60Hz CSA/UL						
	1089 9338 21		GA50 (W) 500V/50-60Hz CSA/UL						
3066		• 1	Rfi-filter						
	1089 9339 10		GA37 380-460V/50-60Hz IEC						
	1089 9339 10		GA37 380-460V/50-60Hz CSA/UL						

23



62094_12



Cubicle - GA37 VSD 200-230V/50-60Hz - CSA/UL - 1)

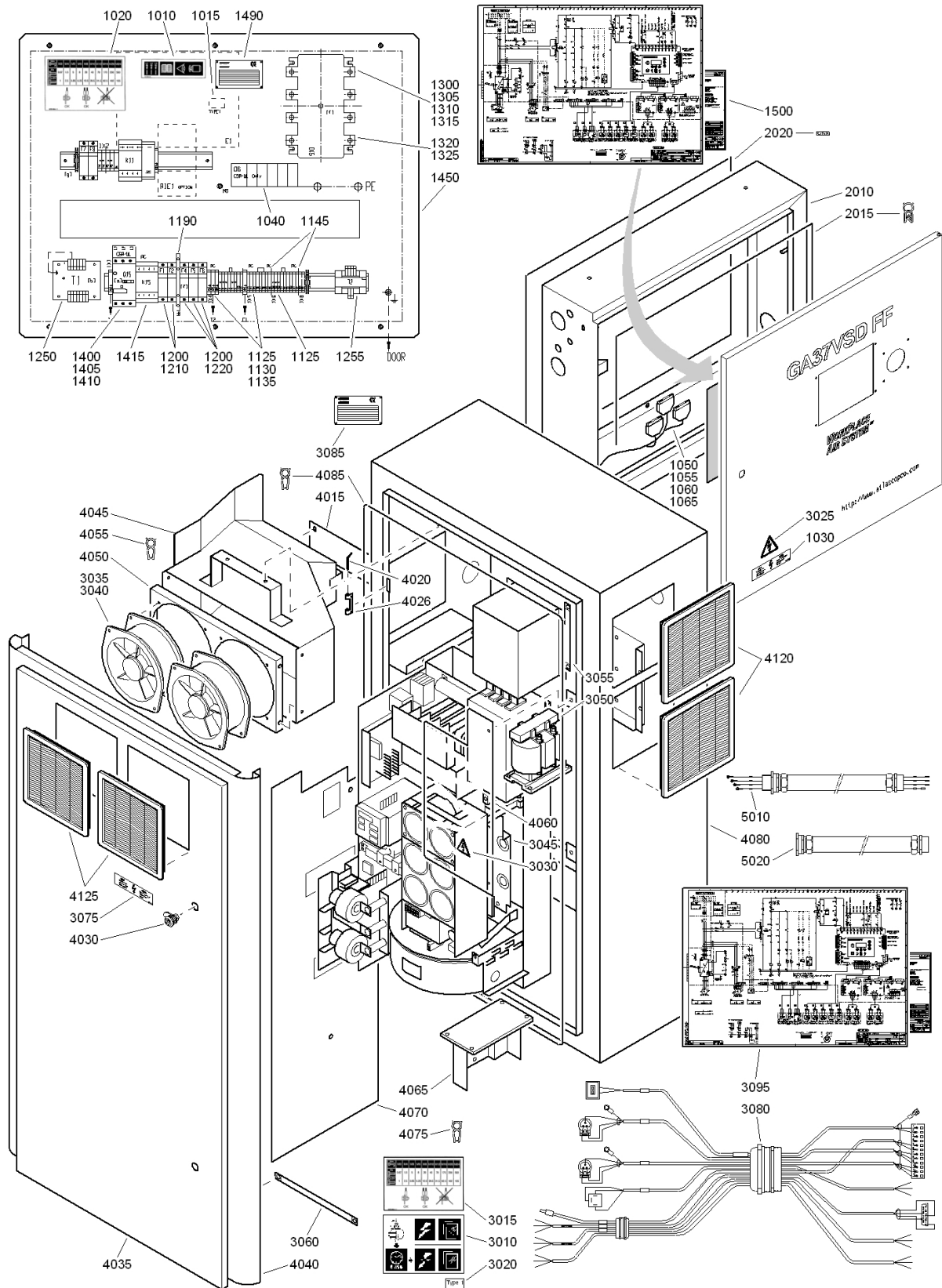
23

Ref.	Part number	Qty	Name	Remarks	Ref.	Part number	Qty	Name	Remarks
	1900 2031 18	1	Cubicle		2240	1079 9906 09 •	1	Label	
			GA37 VSD 200-230V/50-		2245	1079 9911 01 •	1	Label	
			60Hz CSA/UL		2250	1088 1001 02 •	1	Warning mark	
1010	1079 9901 68 •	1	Warning label		2255	1088 1001 04 •	1	Warning mark	
1015	1079 9911 01 •	1	Label		2270	1079 9901 68 •	1	Warning label	
1020	1079 9906 09 •	1	Label		2275	1613 3431 00 •	1	Label	
1030	1613 3431 00 •	1	Label			1613 9988 80 •	1	Cubicle ass'y	2)
1040	1079 9923 15 •	1	Label fuse values		3020	1613 9532 00 ••	3	Pin	
1050	1088 0031 02 •	1	Connector		3026	1613 9525 00 ••	3	Hinge	
1055	1088 0031 13 •	1	Connector		3030	1619 7704 00 ••	2	Lock	
1060	1088 0031 29 •	1	Connector		3035	1613 9947 00 ••	1	Door	
1065	1088 0031 49 •	1	Connector		3040	1613 9863 00 ••	1	Panel	
1125	1089 0506 27 •	5	Terminal		3045	1613 9938 00 ••	1	Duct	
1130	1089 0506 62 •	4	Terminal		3050	1613 9939 00 ••	1	Plate	
1135	1089 0506 63 •	7	Terminal		3055	1202 6584 00 ••	AR	Seal	
1145	1089 0506 23 •	3	Barrier		3065	1622 0180 00 ••	1	Support	
1190	1089 0609 05 •	1	Terminal switch		3070	1622 0181 00 ••	1	Plate	
1200	1089 0612 01 •	5	Fuse holder		3075	1202 6584 00 ••	AR	Seal	
1210	1089 9168 24 •	2	Fuse link		3080	1613 9988 00 ••	1	Cubicle	
1220	1089 9168 02 •	3	Fuse link		3085	1202 6584 00 ••	AR	Seal	
1250	1089 9436 04 •	1	Transformer		3120	1089 9556 03 ••	4	Air inlet with filter	
1255	1089 9136 27 •	1	Transformer		3125	1089 9556 11 ••	2	Air inlet without filter	
1300	1089 9447 13 •	1	Mainswitch		4010	1613 8465 01	1	Cable and conduit	
1305	1089 9447 20 •	1	Contact block		4020	1613 9989 00	1	Conduit assembly	
1310	1089 9447 21 •	1	Protective cover		5010	1613 9986 00	1	Screen	
1315	1089 9447 22 •	1	Extension rod						
1320	1089 9337 20 •	1	Switch						
1325	1089 9337 21 •	1	Door locking						
1400	1089 9416 01 •	1	Aux.contact block						
1405	1089 9416 68 •	1	Circuit breaker						
1410	1089 9416 75 •	1	Connection block						
1415	1089 9415 14 •	1	Contact						
1450	1613 8466 00 •	1	Plate						
1490	1614 8949 00 •	1	Data plate						
1500	9820 3135 08 •	1	Service diagram						
	1900 2031 54	1	Convertor panel						
			GA37 VSD 200-230V/50-						
			60Hz IEC-CSA/UL						
2035	1089 0571 10 •	2	Fan						
2040	1089 0571 15 •	2	Guard grille						
2055	1089 9219 11 •	1	Net filter						
2065	1089 9338 32 •	1	Converter						
2070	1089 9342 02 •	1	Inductor						
2075	1089 9345 01 •	1	Hf-screen						
2080	1089 9345 02 •	2	Hf-screen						
2145	1614 8949 00 •	1	Data plate						
2190	1613 9979 06 •	1	Wire harness						
2235	1079 9901 61 •	1	Decal						

- 1) Up to serial No. :
 Tot serienummer:
 T.o.m. tillverkningsnummer:
 Bis Seriennummer:
 Jusqu'au numéro de série:
 Hasta el número de serie:
 Fino al numeri di serie:
 Gælder til følgende serienumre:
 Até o número de série:
 Til følgende serienummer:
 Seuraavaan valmistusnumeroon asti, No.:
 API-569 999
- 2) Lined with / Bekleed met / Beklädd med / Ausgekleidet mit / Garnir de / Rivestido de / Allineato con / Foret med / Revestido com / Kledd med / Vuorattu :
 Foam: 0395 6001 66 (AR) 25 x 2040 x 1650



24



62838_12

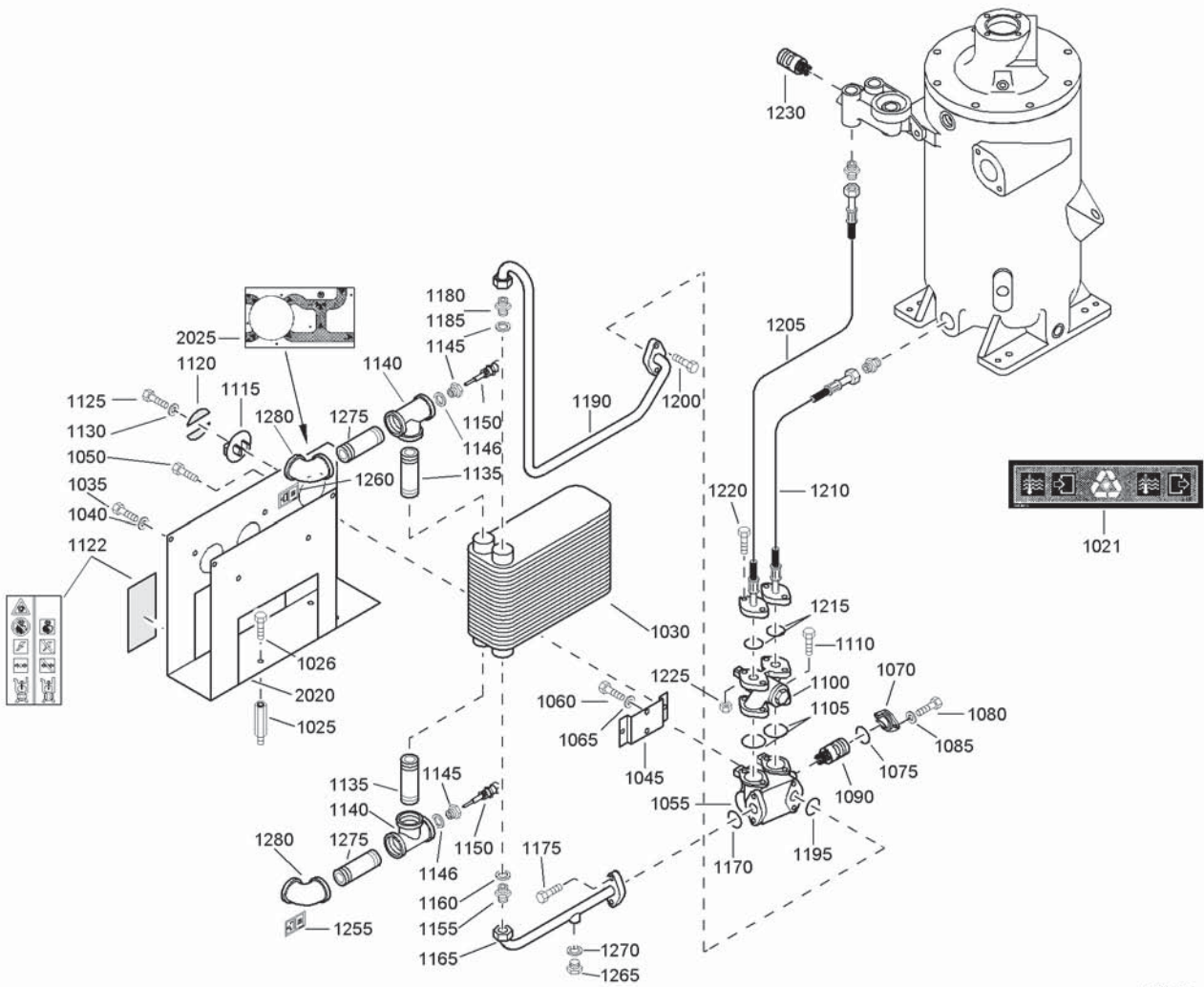


Cubicle - GA37 VSD 200-230V/50-60Hz - CSA/UL - 2)

Ref.	Part number	Qty	Name	Remarks	Ref.	Part number	Qty	Name	Remarks
	1900 2031 28	1	Cubicle		3040	1089 0571 15 •	2	Guard grille	
			GA37VSD 200-230V/50-		3045	1089 9219 11 •	1	Net filter	
			60Hz CSA/UL		3050	1089 9342 02 •	1	Inductor	
1010	1079 9901 68 •	1	Warning label		3055	1089 9345 01 •	1	Hf-screen	
1015	1079 9911 01 •	1	Label		3060	1089 9345 02 •	2	Hf-screen	
1020	1079 9906 09 •	1	Label		3075	1613 3431 00 •	1	Label	
1030	1613 3431 00 •	1	Label		3080	1613 9979 26 •	1	Wire harness	
1040	1079 9923 15 •	1	Label		3085	1614 8949 00 •	1	Data plate	
1050	1088 0031 02 •	1	Connector		3095	9820 3135 10 •	1	Service diagram	
1055	1088 0031 13 •	1	Connector			1613 9988 80 •	1	Cubicle ass'y	1)
1060	1088 0031 29 •	1	Connector		4015	1621 1170 00 ••	1	Plate	
1065	1088 0031 49 •	1	Connector		4020	1613 9532 00 ••	3	Pin	
1125	1089 0506 27 •	5	Terminal		4026	1613 9525 00 ••	3	Hinge	
1130	1089 0506 62 •	4	Terminal		4030	1619 7704 00 ••	2	Lock	
1135	1089 0506 63 •	7	Terminal		4035	1613 9947 00 ••	1	Door	
1145	1089 0506 23 •	3	Barrier		4040	1613 9863 00 ••	1	Panel	
1190	1089 0609 05 •	1	Terminal switch		4045	1613 9938 10 ••	1	Duct	
1200	1089 0612 01 •	5	Fuse holder		4050	1613 9939 10 ••	1	Plate	
1210	1089 9168 24 •	2	Fuse link		4055	1202 6584 00 ••	AR	Seal	
1220	1089 9168 02 •	3	Fuse link		4060	1613 9986 10 ••	1	Screen	
1250	1089 9436 04 •	1	Transformer		4065	1622 0180 01 ••	1	Support	
1255	1089 9136 27 •	1	Transformer		4070	1622 0181 00 ••	1	Plate	
1300	1089 9447 13 •	1	Mainswitch		4075	1202 6584 00 ••	AR	Seal	
1305	1089 9447 20 •	1	Contact block		4080	1613 9988 00 ••	1	Cubicle	
1310	1089 9447 21 •	1	Protective cover		4085	1202 6584 00 ••	AR	Seal	
1315	1089 9447 22 •	1	Extension rod		4120	1089 9556 03 ••	4	Air inlet with filter	
1320	1089 9337 20 •	1	Switch		4125	1089 9556 11 ••	2	Air inlet without filter	
1325	1089 9337 21 •	1	Door locking		5010	1613 8465 01 •	1	Cable and conduit	
1400	1089 9416 01 •	1	Aux.contact block		5020	1613 9989 00 •	1	Conduit assembly	
1405	1089 9416 68 •	1	Circuit breaker						
1410	1089 9416 75 •	1	Connection block		1)	Lined with / Bekleed met / Beklädd med / Ausgekleidet mit / Garnir de / Rivestido de / Allineato con / Foret med / Revestido com / Kledd med / Vuorattu :			
1415	1089 9415 14 •	1	Contacto			Foam : 0395 6001 66 (AR) 25 x 2040 x 1650 self-adhesive			
1450	1613 8466 00 •	1	Plate		2)	From following serial No. onwards:			
1490	1614 8949 00 •	1	Data plate			Geldig vanaf volgend serienummer:			
1500	9820 3135 08 •	1	Service diagram			Fr.o.m. tillverkningsnummer:			
	1622 0519 81 •	1	Cubicle ass'y			Gültig ab Seriennummer:			
2010	1622 0519 01 ••	1	Cubicle			Valable à partir du numéro de série suivant:			
2015	1202 6584 00 ••	AR	Seal			A partir del siguiente número de serie:			
2020	1619 3843 00 ••	AR	Seal			Dai seguenti numeri di serie in avanti:			
	1900 2031 56	1	Converter panel			Gælder fra følgende serienummer:			
			GA37VSD 200-230V/50-			A partir do número de série:			
			60Hz IEC-CSA/UL			Fra og med følgende serienummer:			
3010	1079 9901 61 •	1	Decal			Alkaen valmistusnumerosta			
3015	1079 9906 09 •	1	Label			API-570 000			
3020	1079 9911 01 •	1	Label						
3025	1088 1001 02 •	1	Warning mark						
3030	1088 1001 04 •	1	Warning mark						
3035	1089 0571 10 •	2	Fan						



25



61516_15

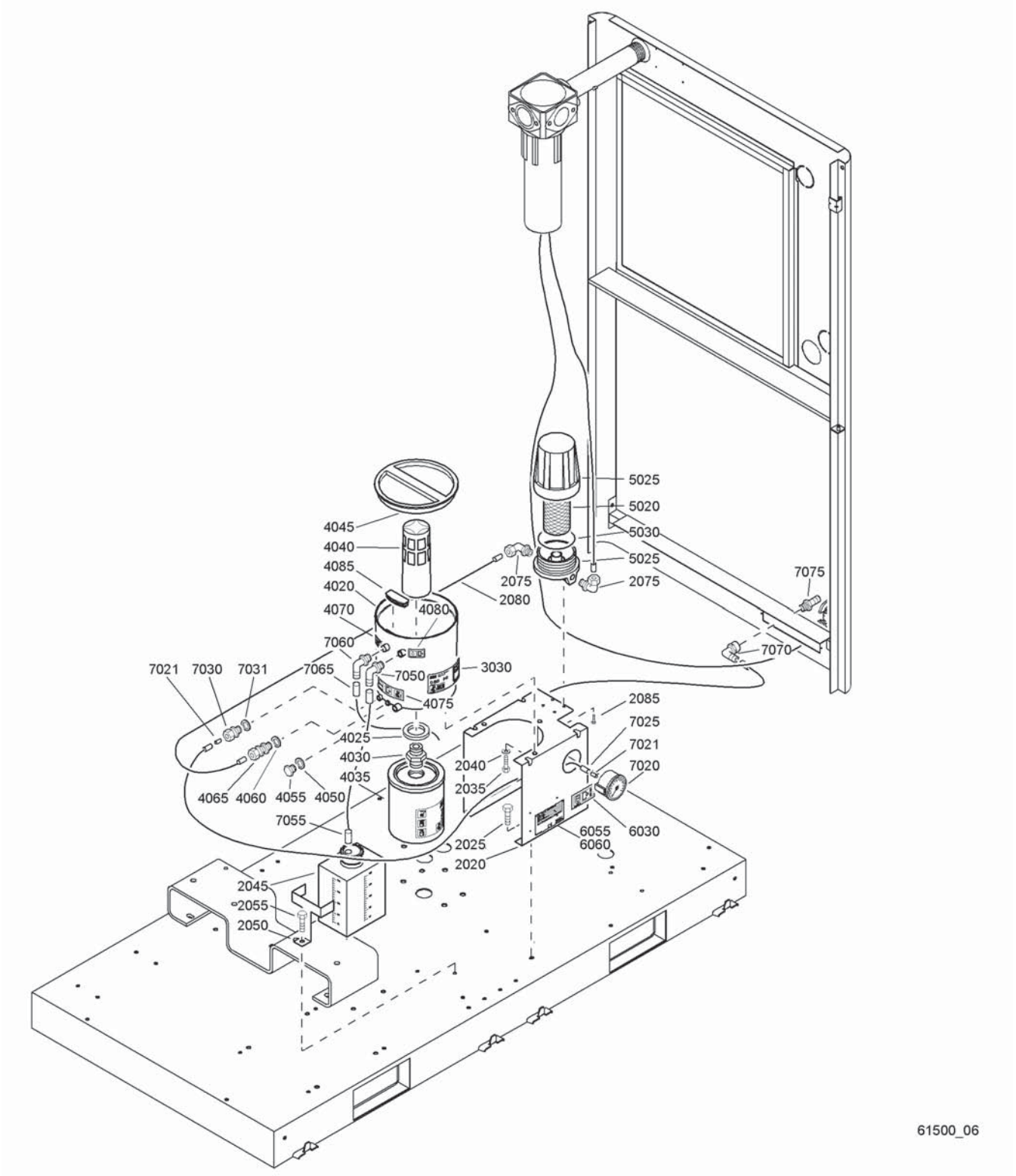
61516_15



Energy recovery system

Ref.	Part number	Qty	Name	Remarks	Ref.	Part number	Qty	Name	Remarks
	8092 2432 97	1	Standard option		1146	0661 1000 44	2	Seal washer	
			Energy recovery		1150	1619 2841 00	2	Thermometer	
1021	1079 9911 57	1	Label		1155	1079 5840 22	1	Nipple	
1025	0324 1800 27	4	Spacing screw		1160	0661 1000 44	1	Seal washer	
1026	0147 1962 72	4	Hexagon bolt		1165	1613 7062 00	1	Pipe	
1030	1613 7634 00	1	Heat exchanger		1170	0663 3129 00	1	O-ring	
1035	0147 1344 03	4	Hexagon bolt		1175	0147 1325 03	2	Hexagon bolt	
1040	0301 2335 00	4	Washer		1180	1079 5840 22	1	Nipple	
1045	1613 7061 00	1	Bracket		1185	0661 1000 44	1	Seal washer	
1050	0147 1962 72	2	Hexagon bolt		1190	1613 8695 00	1	Pipe	
1055	1202 7521 00	1	Therm.housing		1195	0663 3129 00	1	O-ring	
1060	0147 1321 03	2	Hexagon bolt		1200	0147 1325 03	2	Hexagon bolt	
1065	0301 2335 00	2	Washer		1205	1613 8625 01	1	Hose assembly	
1070	1614 6118 00	1	Flange		1210	1613 8624 01	1	Hose assembly	
1075	0663 2101 95	1	O-ring		1215	0663 3129 00	2	O-ring	
1080	0147 1246 03	2	Hexagon bolt		1220	0147 1327 03	4	Hexagon bolt	
1085	0301 2321 00	2	Washer		1225	0266 2110 00	4	Nut	
1090	1619 7333 00	1	Thermostat		1230		1	Thermostat	
1100	1202 7522 00	1	4-way valve			1613 7064 01		60 - 75°C	
	2901 0100 00	1	4-way valve kit			1619 7596 00		65 - 85°C	
	0663 2106 02	• 1	O-ring			1619 7595 00		70 - 85°C	
	0663 2106 03	• 1	O-ring			1619 7493 00		75 - 95°C	
1105	0663 2102 64	2	O-ring			1619 7614 00		80 - 95°C	
1110	0147 1325 03	4	Hexagon bolt		1255	1079 9913 69	1	Inform.label	
1115	1202 7689 00	1	Handle		1260	1079 9913 79	1	Inform.label	
1120	1202 7683 00	2	Label		1265	0686 3716 01	1	Hexagon plug	
1122	1079 9902 89	1	Warning label		1270	0661 1000 38	1	Seal washer	
1125	0147 1321 03	1	Hexagon bolt		1275	0551 0001 82	2	Threaded pipe	
1130	0301 2335 00	1	Washer		1280	0560 0200 24	2	Elbow	
1135	0551 0001 60	2	Threaded pipe			1613 7636 80	1	Support ass'y	
1140	0564 0000 29	2	Tee		2020	1613 7636 00	• 1	Support	
1145	0605 8700 51	2	Bushing		2030	1202 7682 00	• 1	Label	

26



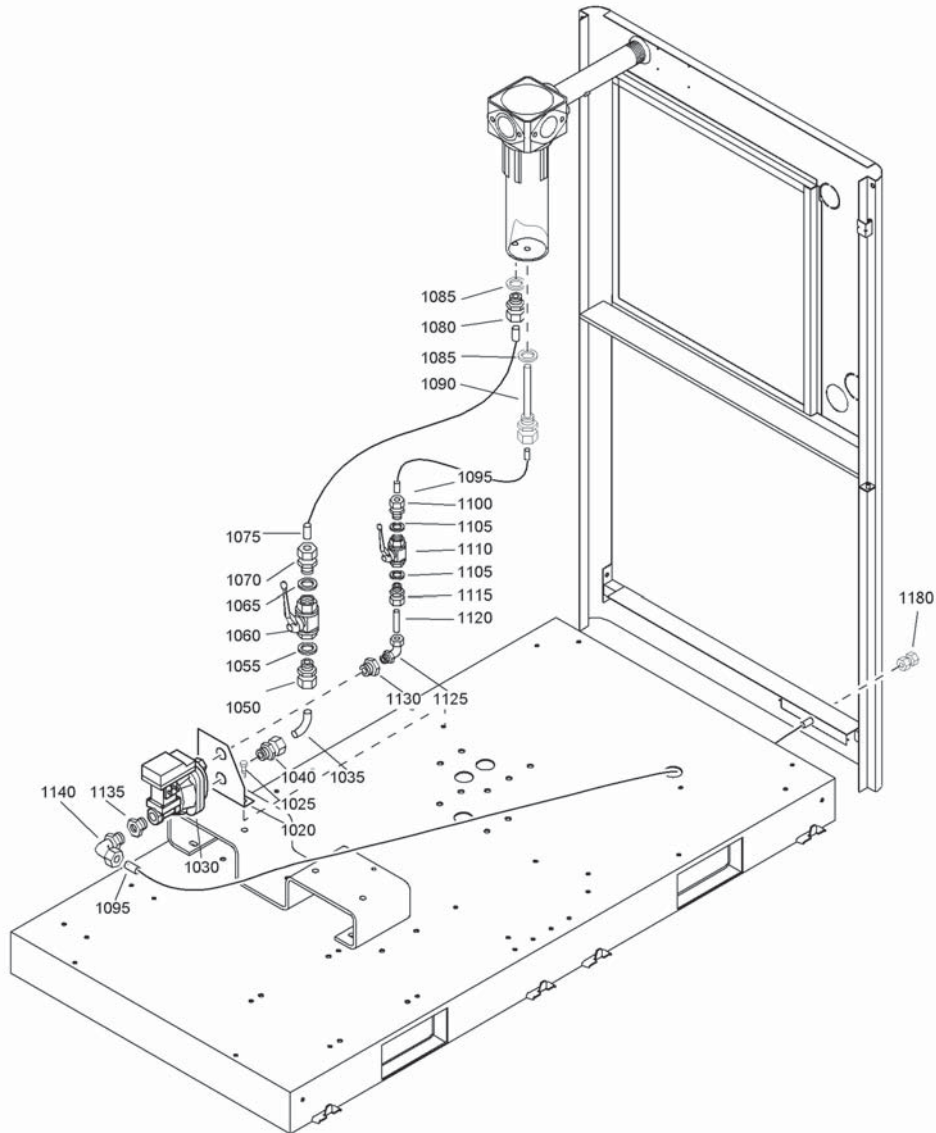
61500_06

Drain system - Oil Separator condensate Drain

Ref.	Part number	Qty	Name	Remarks	Ref.	Part number	Qty	Name	Remarks
	8092 2413 82	1	Standard option		4060	0653 0500 02	••• 1	Gasket	
			Oil Separator condensate		4065	1613 7378 00	••• 1	Strainer	
			Drain		4070	1079 9913 69	••• 1	Inform.label	
2020	1613 8109 00	• 1	Support		4075	1079 9912 07	••• 1	Decal	
2025	1619 2766 00	• 2	Bolt		4080	1079 9912 28	••• 1	Decal	
2035	0147 1322 03	• 3	Hexagon bolt		4085	1613 7945 00	••• 1	Plug	
2040	0301 2335 00	• 3	Washer		5020	1613 7864 00	•• 1	Filter element	
2045	1613 9735 00	• 1	Oil can		5025	1613 7865 00	•• 1	Filter housing	
2050	1622 0091 00	• 1	Support		5030	0663 2104 06	•• 1	O-ring	
2055	1619 2766 00	• 1	Bolt		6030	1079 9912 11	• 1	Decal	
2075	0581 1200 37	• 2	Pipe coupling		6055	1613 7384 00	• 1	Data plate	
2080	0070 6002 05	• AR	Plastic tube		6060	0129 3104 00	• 4	Blind rivet	
2085	0226 0326 00	• 4	Tapping screw		7020	1615 7264 00	• 1	Pressure gauge	
	1613 7301 81	• 1	OSD assembly		7021	0584 9904 00	• 2	Sleeve	
3030	1079 9909 07	•• 1	Label		7025	0070 6002 04	• AR	Plastic tube	
	1613 7301 80	•• 1	OSD assembly		7030	0581 2024 32	• 1	Coupling	
4020	1613 7301 00	••• 1	OSD housing		7031	0653 0500 47	• 1	Gasket	
4025	0661 1054 00	••• 1	Tredo washer		7050	1613 7985 80	• 1	Elbow coupling	
4030	1613 7297 00	••• 1	Valve		7055	0070 6002 14	• AR	Plastic tube	
4035	1613 7277 00	••• 1	Oilfilter OSD		7060	1613 7985 80	• 1	Elbow coupling	
4040	1613 7299 00	••• 1	Filter		7065	0070 6002 14	• AR	Plastic tube	
4045	1613 7298 00	••• 1	Cover		7070	1613 7342 00	• 1	Elbow coupling	
4050	0653 9098 00	••• 1	Flat gasket		7075	1613 7341 00	• 1	Pipe coupling	
4055	0686 3716 02	••• 1	Hexagon plug						

27

Drain system - Electronic Water Drain



61501_06

61501_06

Ref.	Part number	Qty	Name	Remarks	Ref.	Part number	Qty	Name	Remarks
	8092 2428 54	1	Standard option		1070	0581 0000 53	• 1	Straight pipe coupling	
			Electronic Water Drain - IEC		1075	0070 6002 06	• AR	Plastic tube	
	8092 2454 84		Electronic Water Drain - CSA/UL		1080	0581 0000 45	• 1	Pipe coupling	
1020	1613 8675 00	• 1	Support		1085	0661 1000 38	• 2	Seal washer	
1025	0147 1962 72	• 2	Hexagon bolt		1090	1613 8084 00	• 1	Pipe coupling	
1030		• 1	Electronic drain valve		1095	0070 6002 05	• AR	Plastic tube	
	1613 8810 01	•	IEC		1100	0581 0000 35	• 1	Coupling	
	1613 8810 02	•	CSA/UL		1105	0661 1000 38	• 2	Seal washer	
1040	0581 0000 37	• 1	Pipe coupling		1110	0852 0010 11	• 1	Ball valve	
1045	1613 7720 09	• 1	Pipe		1115	0581 0028 01	• 1	Pipe coupling	
1050	0581 0000 37	• 1	Pipe coupling		1120	1613 8108 01	• 1	Pipe	
1055	0661 1000 39	• 1	Seal washer		1125	0581 1228 04	• 1	Elbow	
1060	1619 6153 04	• 1	Ball valve		1130	0605 8814 06	• 1	Bushing	
1065	0661 1000 39	• 1	Seal washer		1135	0607 3000 13	• 1	Reducer	
					1140	0581 1200 23	• 1	Elbow coupling	
					1180	0581 1200 27	• 1	Pipe coupling	



Service Kits

Ref.	Part number	Qty	Name	Remarks	Ref.	Part number	Qty	Name	Remarks
	2900 1017 00	1	Drain valve kit			2901 0414 00	1	Thermostatic valve kit	
	0663 2101 71	1	O-ring			0663 2101 95	1	O-ring	
	0663 2103 86	1	O-ring			1613 7064 01	1	Thermostat 60°C	
	0663 2152 00	1	O ring						
	0663 6147 00	1	O-ring			2901 0415 01	1	Inlet valve kit	
	2901 0245 01	1	Oil can			0147 1247 02	1	Hexagon bolt	
			ROTO-INJECTFLUID 5 1			0663 7150 00	1	O-ring	
	2901 0522 00	1	Oil can			1613 7218 00	1	Spring	
			ROTO-INJECTFLUID 20 1			1613 8923 00	1	Bracket	
	2901 0045 01	1	Oil barrel			1613 8933 00	1	Washer	
			ROTO-INJECTFLUID 209 1			2901 0503 01	1	Check valve kit	
	2901 0217 01	1	Oil stop valve kit			0661 1000 40	1	Seal washer	
	0661 1000 39	1	Seal washer			0663 2107 77	1	O-ring	
	0661 1000 43	1	Seal washer			0663 7136 00	1	O-ring	
	0661 1000 44	1	Seal washer			0663 7138 00	1	O-ring	
	0663 2100 24	1	O-ring			1613 5165 00	1	Spring	
	0663 2101 80	1	O-ring			1613 8906 00	1	Valve (check valve)	
	0663 2101 97	1	O-ring			2901 0566 00	1	Oil separator kit	
	0663 3120 00	1	O-ring			0653 1062 00	4	Flat gasket	
	0663 7135 00	1	O-ring			0653 1100 00	2	Flat gasket	
	1613 2357 00	1	Compr.spring			0663 7134 00	1	O-ring	
	1613 8907 00	1	Valve body (osv)			0663 7138 00	1	O-ring	
	2901 0218 00	1	Minimum pressure valve kit			0663 7168 00	2	O-ring	
	0301 2344 00	4	Washer			1613 8377 00	1	Joint	
	0335 3111 00	1	Retaining ring			1613 8397 00	1	Oil separator element	
	0663 3133 00	1	O-ring			1613 8451 01	1	Antivibration pad	
	0663 7134 00	1	O-ring			2901 0609 01	1	Preventive maintenance kit	
	0663 7136 00	3	O-ring			2901 0217 01	1	Oil stop valve	
	0663 7138 00	2	O-ring			2901 0218 00	1	Min.press.valve	
	1612 4048 00	1	Compr.spring			2901 0219 00	1	Wsd kit ga30-45	
	1612 4049 00	1	Compr.spring			2901 0326 00	1	Filter kit ga30	
	1613 3223 01	1	Washer			2901 0415 01	1	Inlet valve kit	
	1614 4662 00	2	Piston ring			2901 0503 01	1	Check valve kit	
	2901 0219 00	1	Moisture trap kit			2901 0566 00	1	Oil separator kit	
	0301 2344 00	4	Washer			2901 0610 00	1	Element mounting kit	
	0661 1000 38	2	Seal washer			0337 6068 00	1	Parallel key	
	0661 1000 42	1	Seal washer			0653 1062 00	2	Flat gasket	
	0663 7136 00	3	O-ring			0661 1000 43	1	Seal washer	
	2901 0750 00	1	Drain kit WSD80			0663 2107 77	1	O-ring	
	2901 0750 00	1	Drain kit WSD80			0663 3120 00	1	O-ring	
	0663 2101 71	1	O-ring			0663 7135 00	1	O-ring	
	2901 0326 00	1	Filter kit			0663 7136 00	2	O-ring	
	0661 1000 38	1	Seal washer			0663 7138 00	1	O-ring	
	0661 1000 39	2	Seal washer			0663 7150 00	1	O-ring	
	0661 1000 40	1	Seal washer			1613 8377 00	2	Joint	
	0661 1000 43	1	Seal washer			1613 8451 01	2	Antivibration pad	
	0663 2102 15	1	O-ring			1613 9595 01	8	Coupling element	
	1613 6105 00	1	Oil filter						
	1613 7408 00	1	Element(airfilter)						





+7(916) 033-41-41



apsair@apsair.ru

apsair.ru



<https://apsair.ru>